

智慧箱泵集成供水行业领导者

铭星供水设备
MINGXING WATER SUPPLY



SBS SERIES AXIALLY SPLIT CASING DOUBLE SUCTION PUMP

Jiangsu Mingxing water supply equipment Co., Ltd

Address: No. 1, Mingxing North Road, Tech Innovation Park, Jianhu, Yancheng City, Jiangsu, China

P.C.: 224700

Hot Line: 400-6767-228

E-mail: xinxing@xinxingjs.com

Website: www.mxgs.cn/ www.xinxingjs.com



We keep the products updating. The parameters in the catalog are for reference. We have the rights to edit and change the data.

MAKE THE WATER ENDLESS



CONTENTS



01 Company Profile	06 Flushing Pipe Arrangement
03 Product Description	06 Direction of Rotation and Flow
03 Applications	07 Construction Features of SBS Series with Discharge Flange \leq DN350
03 Materials	09 Construction Features of SBS Series with Discharge Flange \geq DN400
03 Operating Range	11 Construction Features of SBSL Series
03 Technology Application	13 Curves, Data and Dimensions
03 Model Code Designation	67 Dimensions of Vertical Split Casing Pump
04 Selection Charts	
05 Selection Charts	
06 Types of Installation	



Brief Introduction Company profile

Jiangsu Mingxing Water Supply Equipment Co., Ltd. is a collection of design, research and development, production, sales, installation, service. The national high-tech enterprise that works in one provides full-stack "wisdom supply" based on the Internet of Things and big data Water "solutions. In 2016, we founded the Leshui Smart water brand, focusing on the depth of secondary water supply technology R&d and innovation. The company has branches in Shanghai, Anhui, Sichuan and other regions, and set up direct sales in many places. Office, focus on providing you with a safe life, fire water supply equipment!

Product-oriented, We has established long-term industry-university-research cooperation with key national research institutes has a provincial R & D platform, with invention patents, utility model patents, Copyrights and other intellectual property rights ten items, SW water tank, box pump integration without floating pump station and other products were rated as provincial high-tech products and Provincial new product and new technology appraisal. The selection and safety of prefabricated box pump integrated fire water supply pump station are edited installation -- MX Intelligent Pump Station 18CS01, Technical regulations of assembled box pump integrated fire water supply pump station CECS 623-2019, participated in the compilation of "Variable Frequency and speed regulation water Supply equipment selection and installation" 16S111, "Sewage lifting device application Technical regulations" CECS463-2017, "water consumption gauge practical atlas, standards and technical documents. Leshui Smart Water focuses on the research and development of domestic water supply equipment, production and sales, into the world's cutting-edge technology field, the core business includes industrial iot concept as the goal, Carry out research and development, production, sales and service of smart iot for water systems, and use smart management platform for water systems, The design, application and maintenance of the system is an opportunity to develop the safety, energy saving and efficient operation of the water system channel, integration of water system innovative products and solutions, to provide customers with a strong service guarantee, build for customers households create a value platform to promote the realization of the value chain of water enterprises with a win-win business model for customers households create greater value.

Since its establishment in 2006, the company has unswervingly adhered to product innovation, in government departments, Hospitals, education and other fields have a broad customer base, sales performance is stable, increasing year by year, The company has passed ISO9001 quality management system and



ISO14000 environmental management system
OHSAS occupational health and safety system
three major certification, fire products through the 3C compulsory certification, the establishment of perfect quality assurance system, and was rated as "AAA "credit firm in Jiangsu Province.



Product Description

SBS series horizontal and SBSL series vertical axially split casing double suction centrifugal pump is a patented product(No. ZL 01 2 39077.1) developed in combination with the characteristics of the similar products in Chinese pump industry. The pumps' performance has been tested and qualified by the China National Industrial Pump Quality Supervision and Testing Center. The technical indicators are in the leading position in China and reaching the advanced level of similar products in the world. The whole series are high in efficiency, good in reliability, and convenient in installation and maintenance.

Materials

Casing: cast iron, ductile iron, nickel cast iron, cast steel, stainless steel, duplex stainless steel, etc;

Impeller and sealing ring: cast iron, ductile iron, cast steel, stainless steel, bronze, duplex stainless steel, etc;

Shaft: carbon steel, stainless steel, duplex stainless steel, etc;

Shaft sleeve: stainless steel, duplex stainless steel, etc;

Different material combinations can allow different working conditions;

Special materials can be customized according to requirements.

Technology Application

High efficiency, high strength, high reliability, long service life.

The optimized hydraulic design based on CFD technology can automatically balance the axial force and radial force to ensure the high efficiency.

Compact structure, reinforced volute casing and high quality components ensure the high stability and reliability of pump.

Applications

For clean water or medium with physical and chemical properties similar to clean water. Water supply for water plants, urban drainage, agricultural irrigation, water circulation for power plant, water supply and drainage for industrial and mining enterprises, water circulation for HVAC, water supply for the shipbuilding industry.

For corrosive medium: Seawater desalination, demineralized water in steel mills, brine transportation.

For hot water with temperature below 130°C. District heating supply and water circulations

Model code designation

Example: SBS (SBSL) 800-970 E (F)

SBS (SBSL) 800-970 E (F)

SBS – SBS series horizontal split casing pump

SBSL – SBSL series vertical split casing pump

800 – Nominal discharge nozzle diameter (mm)

970 – Nominal impeller diameter (mm)

E (F) - code of impeller hydraulic model

Operating range

Max. capacity: 11160 m³/h

Max. head: 200m

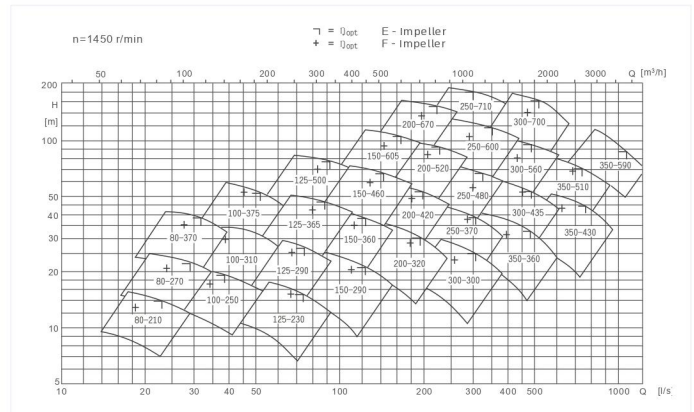
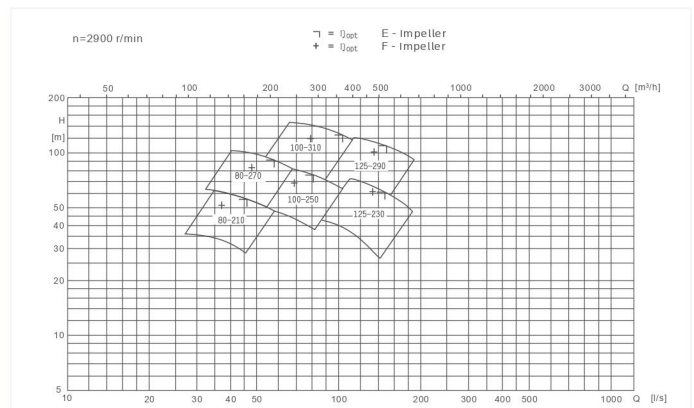
Max. working pressure: 2.5MPa

Max. Suction flange size: DN900 mm

Max. working temperature: 130°C

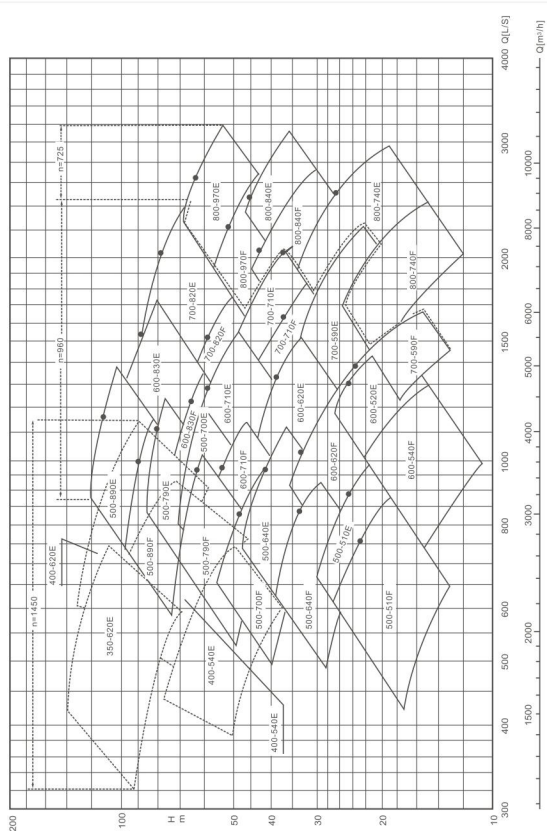
Flange pressure rate: PN1.6MPa, PN2.5MPa

Selection Charts



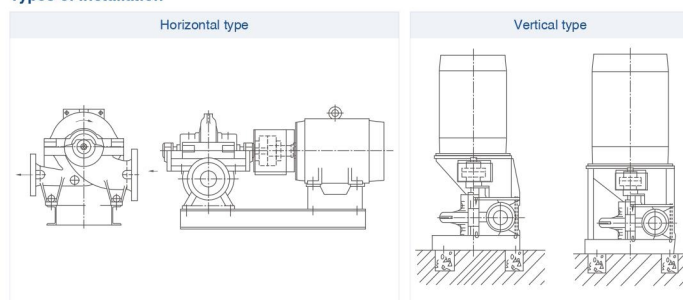
Note: Products beyond the above range can be designed and supplied by orders.

Selection Charts

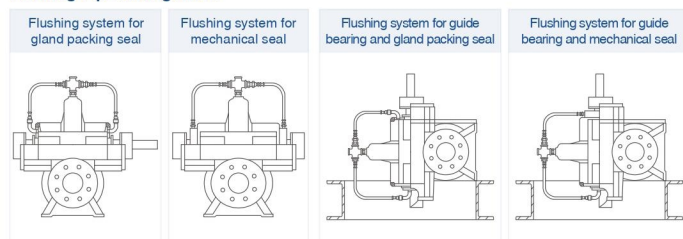


Note: Products beyond the above range can be designed and supplied by orders.

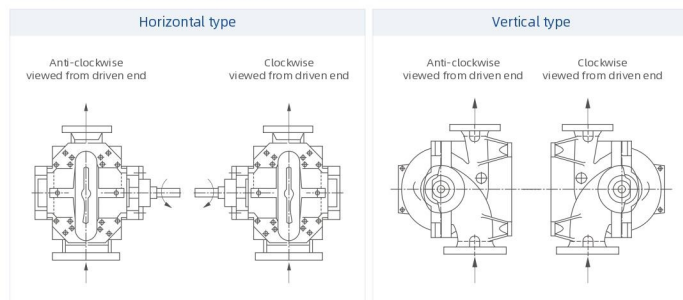
Types of Installation



Flushing Pipe Arrangement



Rotation Direction / Flow Direction



The Construction Features of SBS Series with Discharge Flange ≤ DN350

● Impeller

- A. The double suction impeller with CFD technology balances the axial force automatically. The efficiency will be increased about 3-5%;
- B. The water is sucked in both sides of the impeller, and the impeller blades are placed alternately. This design reduces the flow pulsation, ensures the pump with stable performance;
- C. The water loss is reduced to minimum by using resin core, precision mould, shot blasting treatment;
- D. Different hydraulic model type impellers can be used in the same volute casing, which enlarges the high efficiency range;

- Independent seal chamber, realize automatic and precise positioning of pump cover and pump body.
No need to adjust, easy to install.

- Gland packing seal or mechanical seal for options. The mechanical seal can be single face or double faces.
With heat exchanger, high temperature water can be pumped (below 130°C).

- The pump shaft with reliability design increases the strength level.
Small span, good rigidity and high stability.

- Reliable axial double seal design, respectively set between the shaft sleeve and impeller, the shaft sleeve and the shaft, effectively prevent axial water channeling, and realize the dry shaft design.

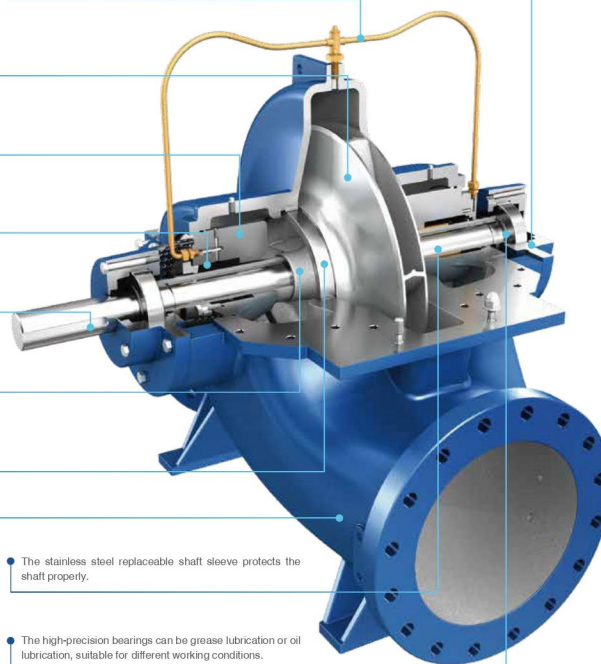
- Replaceable casing wearing ring protects the impeller and housing.
The extended design reduces volume loss and ensures long-term efficient operation of the pump

● Volute casing

- A. The pump casing is with robust design, the working pressure max. to 2.5MPa;
- B. The pump generating high pressure with dual casing balances the radial force;
- C. The innovative volute section angle is designed to the minimum neck load pulse;
- D. The compact design minimizes the distance between bearings, reduces the shaft torque force, strengthens the rigidity of the shaft;
- E. Inline design, the suction and discharge flange are in the same line, easy in installation;
- F. With special structure design, the pump can be installed in horizontal or vertical way;
- G. Resin molds, precision casting, shot blasting, smooth runners for minimal hydraulic losses;

- The left and right bearing housings are universal, which is convenient for management. The bearing temperature measuring device holes are reserved on the bearing housing of the both sides. The temperature measuring device can be installed according to the requirements of user. The operating temperature of the pump bearing can be monitored at any time.

- The stainless steel sealing flushing pipe is installed on the pump cover.
Which is equipped with a flow control valve to adjust the sealing flushing amount at any time to effectively cool, flush and lubricate the seal.



- The stainless steel replaceable shaft sleeve protects the shaft properly.

- The high-precision bearings can be grease lubrication or oil lubrication, suitable for different working conditions.

The Construction Features of SBS Series with Discharge Flange \geq DN350

● Impeller

- A. The double suction impeller with CFD technology balances the axial force automatically. The efficiency will be increased about 3-5%;
- B. The water is sucked in both sides of the impeller, and the impeller blades are placed alternately. This design reduces the flow pulsation, ensures the pump with stable performance;
- C. The water loss is reduced to minimum by using resin core, precision mould, shot blasting treatment;
- D. Different hydraulic model type impellers can be used in the same volute casing, which enlarges the high efficiency range.

- The bearing temperature measuring device holes are reserved on the bearing housing of the both sides. The temperature measuring device can be installed according to the requirements of user. The operating temperature of the pump bearing can be monitored at any time.

- The pump shaft with reliability design increases the strength level. Small span, good rigidity and high stability.

- The high-precision bearings can be grease lubrication or oil lubrication, suitable for different working conditions.

- The stainless steel replaceable shaft sleeve protects the shaft properly.

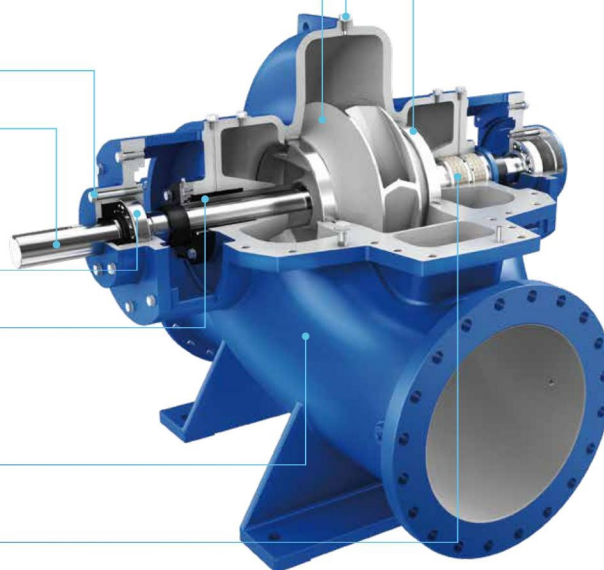
● Volute casing

- A. The pump casing is with robust design, the working pressure max. to 2.5MPa;
- B. The pump generating high pressure with dual casing balances the radial force;
- C. The innovative volute section angle is designed to the minimum neck load pulse;
- D. Resin molds, precision casting, shot blasting, smooth runners for minimal hydraulic losses.

- Gland packing seal or mechanical seal for options. The mechanical seal can be single face or double faces. With heat exchanger, high temperature water can be pumped (below 130°C).

- Replaceable casing wearing ring protects the impeller and housing. The extended design reduces volume loss and ensures long-term efficient operation of the pump.

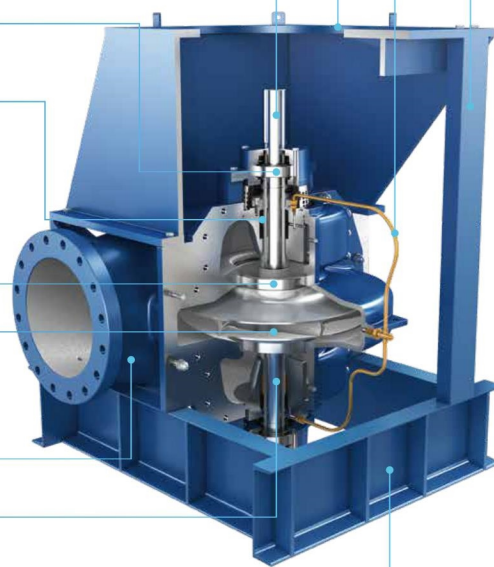
- The stainless steel sealing flushing pipe is installed on the pump cover. Which is equipped with a flow control valve to adjust the sealing flushing amount at any time to effectively cool, flush and lubricate the seal.



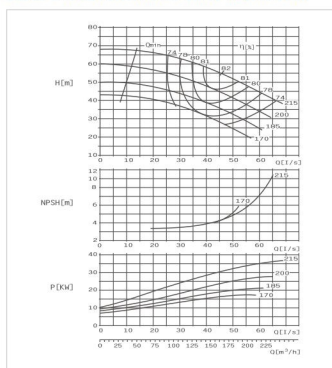
The Construction Features of SBSL Series Vertical Split Casing Pump

- Strong and reliable motor support frame, with enhanced design to improve the reliability.
- The pump shaft is with high reliability to increase the strength ratings.
- High-precision bearings, long service life.
- Gland packing seal or mechanical seal for options. The mechanical seal can be single face or double faces. With heat exchanger, high temperature water can be pumped (below 130°C).
- The replaceable casing wearing ring protects the impeller and housing. The extended design reduces volume loss and ensures long-term efficient operation of the pump.
- **Impeller**
 - A. The double suction impeller with CFD technology balances the axial force automatically. The efficiency will be increased about 3-5%;
 - B. The water is sucked in both sides of the impeller, and the impeller blades are placed alternately. This design reduces the flow pulsation, ensures the pump with stable performance;
 - C. Resin molds, precision casting, shot blasting, smooth runners for minimal hydraulic losses;
 - D. Different hydraulic model type impellers can be used in the same volute casing, which enlarges the high efficiency range.
- **Volute casing**
 - A. The pump casing is with robust design, the working pressure max. to 2.5MPa;
 - B. The pump generating high pressure with dual casing balances the radial force;
 - C. The innovative volute section angle is designed to the minimum neck load pulse;
 - D. Resin molds, precision casting, shot blasting, smooth runners for minimal hydraulic losses.
- The stainless steel replaceable shaft sleeve protects the shaft properly.
- The high-strength design of the base plate keeps the stability of the equipment.

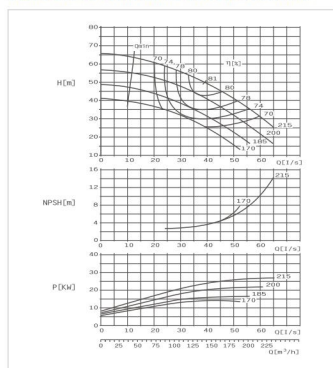
- The auxiliary support makes the pump run more stable and reliable.
- The stainless steel sealing flushing pipe is installed on the pump cover. Which is equipped with a flow control valve to adjust the sealing flushing amount at any time to effectively cool, flush and lubricate the seal.



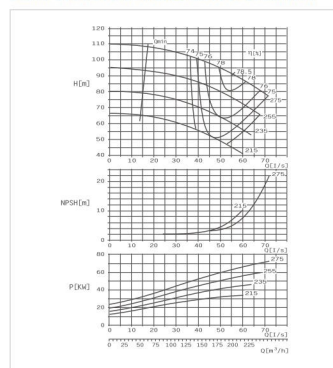
SBS80-210 EG Performance Curve n=2900r/min



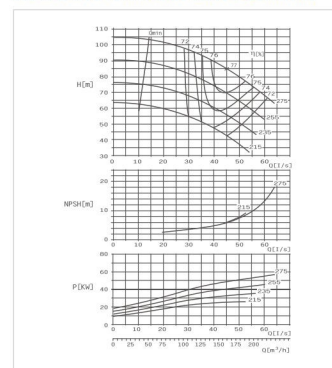
SBS80-210 FG Performance Curve n=2900r/min



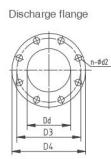
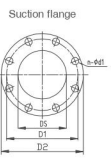
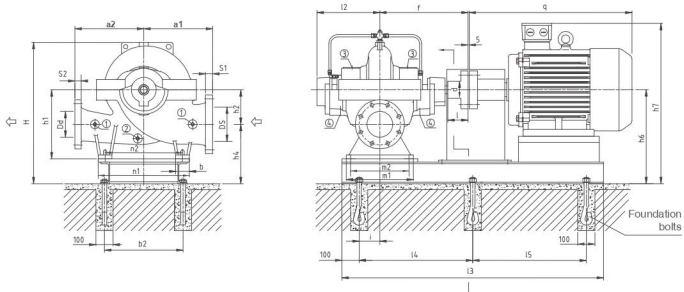
SBS80-270 EG Performance Curve n=2900r/min



SBS80-270 FG Performance Curve n=2900r/min



SBS Horizontal pump installation dimension drawing



- Connection Dimensions**
- Pressure gauge Rp1/2
 - Drain plug Rp1/2
 - Air vent Rp1/2
 - Leakage drains hole Rp3/4

Parameter Chart

Model	Capacity		Head	Speed	Eff.	Motor power	NPSH	Impeller diameter
	m³/h	L/S						
SBS 80-210EG	131	36.4	60.5	2900	80.6	37	5.1	215
	164	45.6	55		82			
	197	54.6	50		80.2			
	121	33.6	52		79.3			
	151	42	47.5		81			
	181	50.4	42.2		80			
	110	30.6	37		75.3			
	137	38	33.5		77.8			
	164	45.6	27.7		74			
	144	40	39		80.5			
SBS 80-210FG	134	37.1	51	2900	81	30	4	215
	160	44.5	46		80.1			
	196	54.4	42.7		78.2			
	133	36.9	43.5		80			
	159	44.2	37		80.1			
	190	52.8	40		75.5			
	124	34.5	36		78.2			
	149	41.4	30		78			
	91	25.2	35		71.5			
	133	31.5	31		74			
SBS 80-270EG	136	37.8	27	2900	72	15	3.5	170
	166	46.1	27.5		72.7			
	197	54.6	27		72.7			
	121	33.6	27		72.7			
	151	42	27		72.7			
	181	50.4	27		72.7			
	110	30.6	27		72.7			
	137	38	27		72.7			
	164	45.6	27		72.7			
	144	40	27		72.7			

Parameter Chart

Model	Capacity		Head	Speed	Eff.	Motor power	NPSH	Impeller diameter
	m³/h	L/S						
SBS 80-270EG	166	46.1	97.5	2900	77.2	75	7	275
	207	57.5	90		78.5			
	248	69	79		75.5			
	156	43.2	83.5		76			
	194	54	77		77.5			
	231	64.8	69		75.5			
	147	40.8	70		74.7			
	184	51	63.5		76			
	220	61.2	55		74			
	139	38.4	56.5		74.2			
SBS 80-270FG	171	47.5	82.5	2900	77	75	7.3	275
	205	57	72.5		75			
	122	34	79.5		74.4			
	153	42.5	71.5		76.2			
	184	51	67		76			
	115	31.9	64.8		73.7			
	144	40	60		75.2			
	173	48.1	53		74.2			
	110	30.6	54.5		72.5			
	137	38.1	49		74.4			
SBS 80-270FG	164	45.6	42	2900	72.5	30	5.5	215
	194	54	37		72.5			
	224	63	32		72.5			
	124	34.5	36		78.2			
	149	41.4	30		78			
	91	25.2	35		71.5			
	133	31.5	31		74			
	136	37.8	27		72			
	166	46.1	27.5		72.7			
	197	54.6	27		72.7			

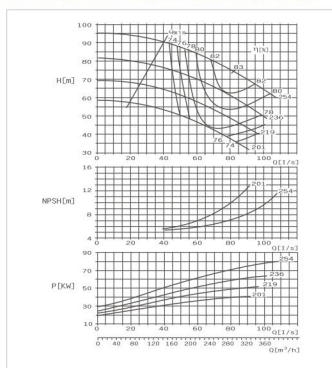
Dimensions

Model	Suction flange (mm)					Discharge flange (mm)					Pump size (mm)										WG1		
	DS	D1	D2	n-φd1	S1	D3	D4	D4	n-φd2	S2	m1	m2	n1	n2	b	a1	a2	φ	h1	h2		H	kg
80-210	125	210	250	8-φ18	31	80	160	200	8-φ18	27	320	270	410	340	70	300	300	310	385	315	140	555	219
80-270	125	210	250	8-φ18	31	80	160	200	8-φ18	27	320	270	410	340	70	300	300	310	385	315	140	555	226

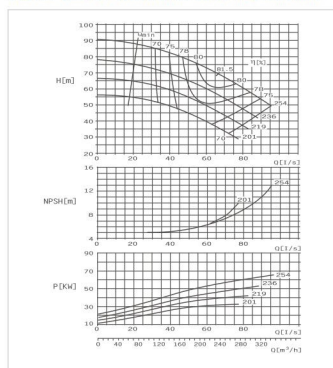
Installation dimensions

Model	Motor		h4	h6	h7	B	I4	I5	i	q	Motor weight (kg)	Baseplate weight (kg)	Coupling d/d	Foundation bolts			
	Frame Size	Power (kW)															
SBS80-210	160L	15	490	295	435	700	1050	425	70	665	140	132	φ80×80	6-M16×350			
	180M	22													700	1100	450
	200L	30/37													720	1110	455
	220M	45													765	1160	495
	250M	55													510	815	1230
SBS80-270	280S	75	510	315	455	880	1360	595	70	945	450	147					
										820	1320	560					
										880	1360	595					

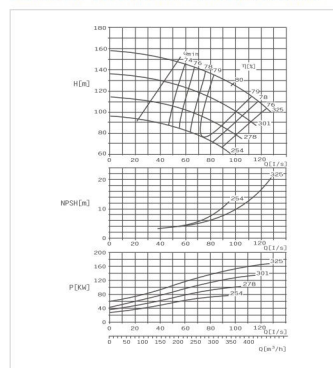
SBS100-250 EG Performance Curve n=2900r/min



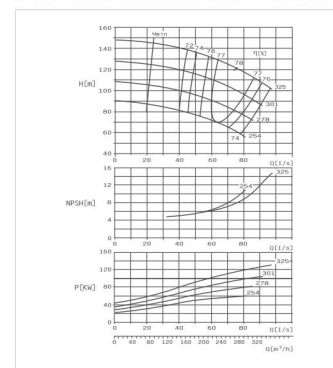
SBS100-250 FG Performance Curve n=2900r/min



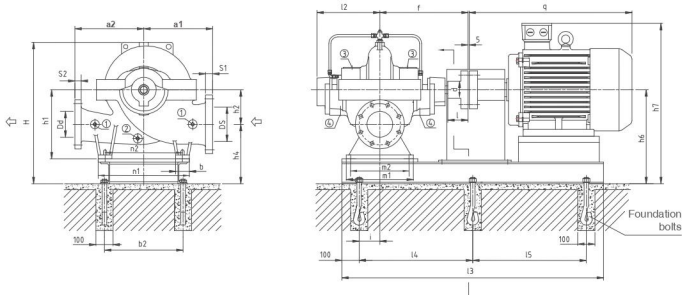
SBS100-310 EG Performance Curve n=2900r/min



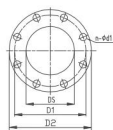
SBS100-310 FG Performance Curve n=2900r/min



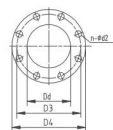
SBS Horizontal pump installation dimension drawing



Suction flange



Discharge flange



Connection Dimensions

- ① Pressure gauge Rp1/2
- ② Drain plug Rp1/2
- ③ Air vent Rp1/2
- ④ Leakage drains hole Rp3/4

Parameter Chart

Model	Capacity		Head	Speed	Eff.	Motor power	NPSH	Impeller diameter
	m³/h	L/S						
SBS 100-250EG	230	64	83	2900	80.7	90	9	254
	289	80	75	80	90	9	254	
	346	96	67	80.5	90	9	254	
	219	60.8	69	79.3	75	9.5	216	
	274	76	63	80.5	75	9.5	216	
	328	91.2	55	75	77	9.7	219	
	209	58	59	77.2	55	9.7	219	
	261	72.5	52	79	55	9.7	219	
	313	87	46.5	77	45	9.7	201	
	189	53.6	49	76	45	9.7	201	
SBS 100-250FG	240	66.7	45	78	45	9.7	201	
	290	80.6	37	74.5	75	8.6	254	
	196	54.4	75	80	79	7.8	236	
	245	68	68	81.5	75	8.6	254	
	294	81.6	59	79	75	8.6	254	
	180	50	65	78	55	7.8	236	
	223	62	59	79.5	55	7.8	236	
	268	74.4	51	77	45	7.4	219	
	165	45.8	54	76.5	45	7.4	219	
	205	57	51	77.5	45	7.4	219	
SBS 100-310EG	246	68.4	44	76	37	7.1	201	
	150	41.7	48	75	37	7.1	201	
	190	52.8	45	76	37	7.1	201	
	227	63	38	75.5	37	7.1	201	

Parameter Chart

Model	Capacity		Head	Speed	Eff.	Motor power	NPSH	Impeller diameter
	m³/h	L/S						
SBS 100-310EG	254	81.6	135	2900	78.5	185	13.7	325
	367	102	125	80	185	13.7	325	
	440	122.2	105	80.5	185	13.7	325	
	268	74.4	116	78.3	160	12.2	301	
	335	93	106	79.6	160	12.2	301	
	402	111.7	92	77	110	10.7	278	
	242	67.2	98	78.1	110	10.7	278	
	302	83.9	90	79.3	90	9.2	254	
	363	100.9	80	77.2	90	9.2	254	
	182	50.5	82	77	78	132	10.2	325
SBS 100-310FG	227	77	74	78.3	90	9.2	254	
	331	92.4	65.5	76	78	132	10.2	325
	226	62.8	130	78.5	110	10.7	278	
	283	78.5	119	78	78	132	10.2	325
	340	94.4	105	75.5	110	10.7	278	
	208	57.8	111	76.3	110	10.7	278	
	260	72.2	103	77.4	110	10.7	278	
	310	86.1	90	76	90	9.2	254	
	200	55.6	92	78.1	90	9.2	254	
	250	69.3	84	77.3	90	9.2	254	
SBS 100-310FG	300	83.3	74	75	75	8.5	254	
	187	52	78	75	75	8.5	254	
	254	65	69	77	75	8.5	254	
	281	78.1	60	75	75	8.5	254	

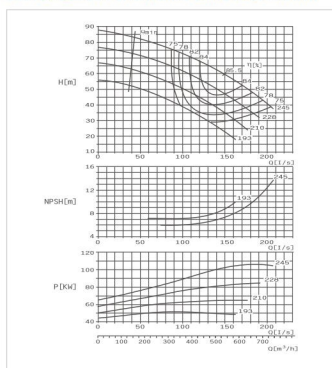
Dimensions

Model	Suction flange (mm)					Discharge flange (mm)					Pump size (mm)										WG1		
	DS	D1	D2	ncD1	S1	Dd	D3	D4	ncD2	S2	m1	m2	n1	r2	b	a1	a2	L2	f	h1		h2	H
100-250	150	240	285	ø-ø33	31	100	180	220	ø-ø10	20	320	270	470	400	70	330	330	310	385	355	170	638	257
100-310	150	240	285	ø-ø33	31	100	180	220	ø-ø10	20	320	270	470	400	70	330	330	310	385	355	170	638	262

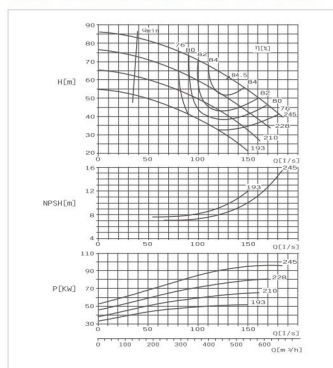
Installation dimensions

Model	Motor Frame Size	Power (kW)	b2	h4	h6	h7	B	L4	L5	i	q	Motor weight (kg)	Baseplate weight (kg)	Coupling d1	Foundation bolts
100-250	200L	37	500	305	475	805	1190	495				790	270	145	
	229M	45	510			830	1210	505				865	320	145	
	259M	55	510			720	1320	560				945	450	152	
	280S	75	530			795	1390	595			70	990	580	180	
100-310	208M	60	600	325	495	795	1440	620				990	620	185	
	315S	110	600			985	1480	640				1185	935	198	
	319M	132	600			985	1530	655				1295	1032	204	
	315L	160-200	600			985	1560	680				1295	1100	208	

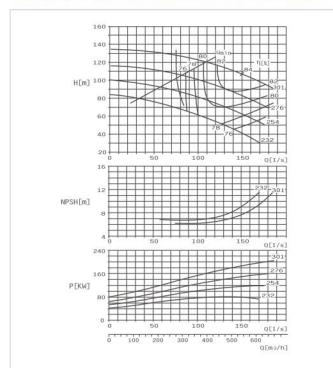
SBS125-230 EG Performance Curve n=2900r/min



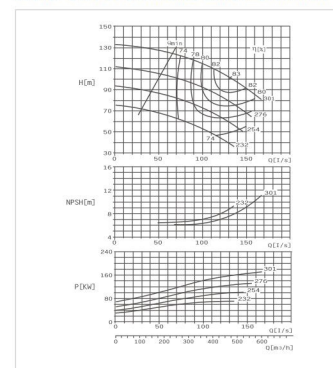
SBS125-230 FG Performance Curve n=2900r/min



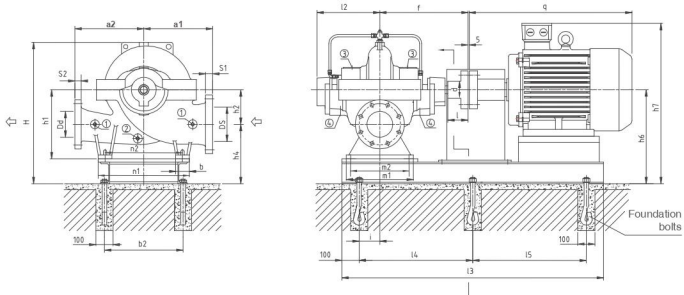
SBS125-290 EG Performance Curve n=2900r/min



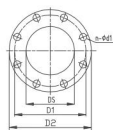
SBS125-290 FG Performance Curve n=2900r/min



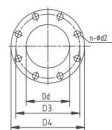
SBS Horizontal pump installation dimension drawing



Suction flange



Discharge flange



Connection Dimensions

- ① Pressure gauge Rp1/2
- ② Drain plug Rp1/2
- ③ Air vent Rp1/2
- ④ Leakage drains hole Rp3/4

Parameter Chart

Model	Capacity		Head	Speed	Eff.	Motor power	NPSH	Impeller diameter
	m³/h	L/S						
SBS 125-290EG	426	118.4	68	2900	84.2	110	9.9	245
	541	150.3	60	85.5	110	10.1	228	
	639	172.6	48	82	90	10.3	210	
	392	108.8	60	82.5	75	10.7	193	
	490	136.1	52	84	75	10.3	210	
	585	163.2	43.5	82.5	76	11.0	121	
	363	100.8	50	78	81	9.0	118	
	454	126	41.5	82	75	10.7	193	
	499	135.7	30	76	77	55	12	
	566	152.2	55	88.6	81	90	11.8	
SBS 125-230FG	349	96.9	60	81	81.2	119	210	
	436	121	53	84	90	11.8	228	
	529	145.2	44	77.5	119	210		
	328	91.2	52	77.5	75	11.9	210	
	410	114	45	82	75	11.9	210	
	490	136.7	37	78.4	75	12	193	
	305	84.8	42.5	75	55	12	193	
	382	106	37	77	75	12	193	
	458	127.2	38	75	75	12	193	

Parameter Chart

Model	Capacity		Head	Speed	Eff.	Motor power	NPSH	Impeller diameter
	m³/h	L/S						
SBS 125-290EG	428	118.8	117	2900	82	110	10.9	301
	535	148.5	108	84	200	10.9	301	
	640	178.3	98	83	160	10.7	276	
	397	110.3	97	80	80	10.7	276	
	497	138	88	82	90	10.4	232	
	596	165.6	75	79.5	75	10.5	254	
	363	100.8	80	78.3	80	10.5	254	
	454	126	72	80	132	10.5	254	
	544	151.2	62	78.8	80	10.4	232	
	323	89.6	65	76.5	75	10.5	276	
SBS 125-230FG	403	112	57	78	90	10.4	232	
	484	134.4	47	77	81	10.9	301	
	383	106.4	113	81.6	80	10.5	276	
	480	133.3	100	83	132	10.5	276	
	575	159.6	85.5	80.5	75	10.5	276	
	349	96.7	93.5	79.5	75	10.5	276	
	436	121	83.5	82	132	10.5	276	
	529	145.2	70	79	75	10.5	276	
	308	85.6	78	77.5	110	10.1	254	
	385	107	70	79	75	10.5	276	

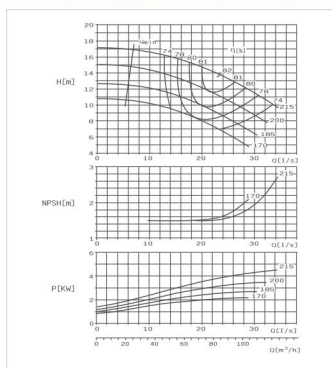
Dimensions

Model	Suction flange (mm)					Discharge flange (mm)					Pump size (mm)										WG1		
	D5	D1	D2	n-φd1	S1	D3	D4	D4	n-φd2	S2	m1	m2	n1	n2	b	a1	a2	φ	f	h1		h2	H
125-230	200	295	340	12-φ23	35	125	210	258	8-φ18	31	390	340	530	450	80	370	370	370	515	400	200	680	350
125-290	200	295	340	12-φ23	35	125	210	258	8-φ18	31	390	340	530	450	80	370	370	370	515	480	200	680	340

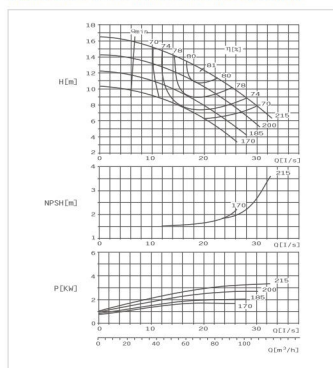
Installation dimensions

Model	Motor		b2	h4	h6	h7	B	I4	I5	i	q	Motor weight (kg)	Baseplate weight (kg)	Coupling φd	Foundation bolts
	Frame Size	Power (kW)													
SBS125-230EG	2504	55	560	320	320	745	1440	620				940	450	172	6-M20×400
	2805	75													
	2804	90													
	3155	110													
SBS125-290EG	3194	132	600	340	540	1010	1620	710				990	580	200	6-M20×400
	3194	152													
	3194	192													
	3156	160-200													

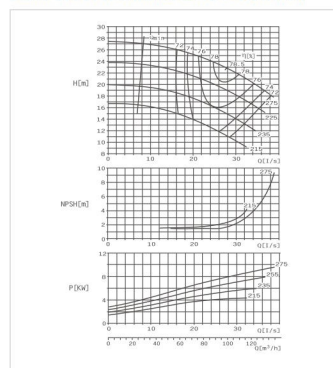
SBS80-210 E Performance Curve n=1450r/min



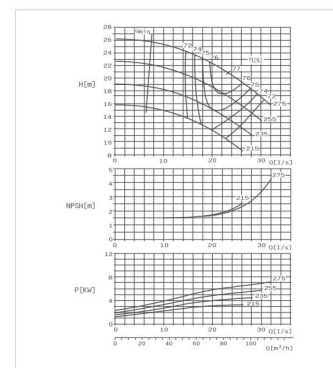
SBS80-210 F Performance Curve n=1450r/min



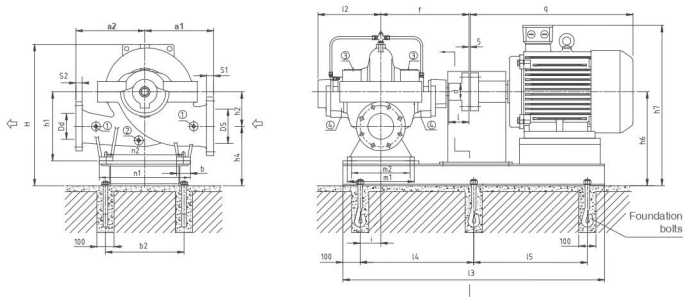
SBS80-270 E Performance Curve n=1450r/min



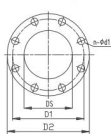
SBS80-270 F Performance Curve =1450r/min



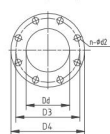
SBS Horizontal pump installation dimension drawing



Suction flange



Discharge flange



Connection Dimensions

- ① Pressure gauge Rp1/2
- ② Drain plug Rp1/2
- ③ Air vent Rp1/2
- ④ Leakage drains hole Rp3/4

Parameter Chart

Model	Capacity		Head	Speed	Eff.	Motor power	NPSH	Impeller diameter
	m ³ /h	L/S						
SBS 80-210E	66	18.3	15	1450	80.5	5.5	2.1	215
	85	23.1	13.8	80.5	5.5	2.1	215	
	100	27.8	12.2	79.5	4	2.1	200	
	61	16.9	13	79	3	2.1	185	
	76	21.1	11.8	81	4	2.1	200	
	90	25	10.5	79.7	3	2.1	185	
	98	28.1	11	78	3	2.1	185	
	72	20	9.8	80.5	3	2.1	185	
	87	24.2	8.7	78	3	2.1	170	
	55	15.3	9.5	76	3	2.1	170	
SBS 80-210F	69	19.2	8.2	78	3	2.1	170	
	85	23.1	7	75	4	2.1	215	
	52	14.5	14.2	78	4	2.1	215	
	65	18.1	12.8	81	4	2.1	215	
	78	21.7	10	80.2	4	2.1	200	
	52	14.4	12	78.5	4	2.1	200	
	64	17.8	11.8	78	3	2.1	185	
	77	21.4	11.7	78	3	2.1	185	
	50	13.9	10	76	3	2.1	185	
	61	17	9	78	2.2	2.1	170	

Parameter Chart

Model	Capacity		Head	Speed	Eff.	Motor power	NPSH	Impeller diameter
	m ³ /h	L/S						
SBS 80-270E	83	23.1	24	1450	77.5	11	2.8	275
	104	28.9	22.5	78.5	11	2.8	275	
	125	34.7	19.5	75	11	2.7	255	
	80	22.2	21.3	75	5.5	2.5	235	
	99	27.8	19	78	5.5	2.5	235	
	120	33.3	17	74.5	5.5	2.5	235	
	72	20	17.5	74.5	5.5	2.5	235	
	90	25	16	76	5.5	2.5	235	
	108	30	13.7	74	5.5	2.5	235	
	67	18.6	13.8	74	5.5	2.5	235	
SBS 80-270F	84	23.3	13	75	5.5	2.5	235	
	100	27.8	11.5	73.2	5.5	2.5	235	
	68	18.9	23.1	75.8	4	2.1	215	
	65	23.6	20.7	77	4	2.1	215	
	102	28.3	18.2	75.4	4	2.1	215	
	61	16.9	20	74.5	4	2.1	215	
	77	21.4	18.1	76	4	2.1	215	
	92	25.5	16	75	4	2.1	215	
	58	16.1	16.5	71	4	2.1	215	
	72	20	15	75	4	2.1	215	

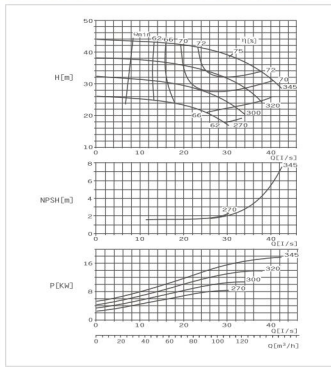
Dimensions

Model	Suction flange (mm)					Discharge flange (mm)					Pump size (mm)										WG1		
	D5	D1	D2	n-φd1	S1	D6	D3	D4	n-φd2	S2	m1	m2	n1	n2	b	a1	a2	φ	f	h1		h2	H
80-210	125	210	250	8-φ18	31	80	160	200	8-φ18	27	320	270	410	340	70	300	300	310	385	315	140	555	219
80-270	125	210	250	8-φ18	31	80	160	200	8-φ18	27	320	270	410	340	70	300	300	310	385	315	140	555	226

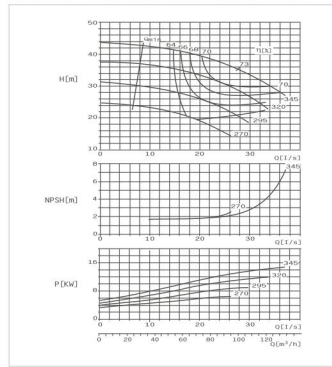
Installation dimensions

Model	Motor		b2	h4	h6	h7	B	l4	l5	i	q	Motor weight (kg)	Baseplate weight (kg)	Coupling d/d	Foundation bolts
	Frame Size	Power (kW)													
80-210	100	2.0/3					620	880	340			403	45	116	
	112M	4	430	295	435	638	890	345		70		410	55	116	
	122S	5.5				658	930	365				485	75	118	
	132M	7.5				658	970	385				525	88	122	
	160M	11				700	1050	425				665	132	128	

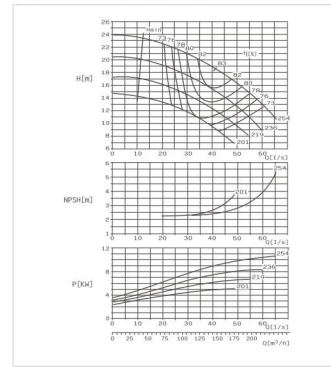
SBS580-370 E Performance Curve n=1450r/min



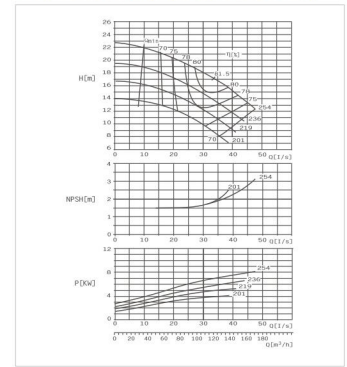
SBS580-370 F Performance Curve n=1450r/min



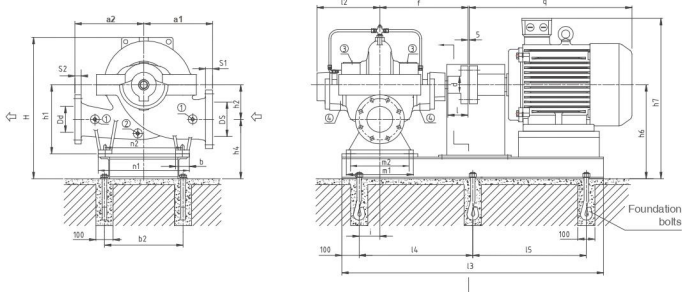
SBS100-250 E Performance Curve n=1450r/min



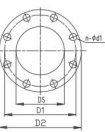
SBS100-250 F Performance Curve n=1450r/min



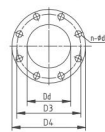
SBS Horizontal pump installation dimension drawing



Suction flange



Discharge flange



Connection Dimensions

- ① Pressure gauge Rp1/2
- ② Drain plug Rp1/2
- ③ Air vent Rp1/2
- ④ Leakage drains hole Rp3/4

Parameter Chart

Model	Capacity		Head	Speed	Eff.	Motor power	NPSH	Impeller diameter	
	m³/h	L/S							
SBS 80-370E	90	25	41	75	18.5	2.8	345		
	113	31.4	38.8	75	18.5	2.8	345		
	136	37.8	33.5	71.8	15	2.3	320		
	80	22.2	35	71	15	2.3	320		
	99	27.5	33	72.2	15	2.3	320		
	120	33.3	29.1	68.3	11	2.3	270		
	70	19.4	29.3	38.4	66	11	2.3	270	
	88	24.4	23.5	70	11	2.3	270		
	98	27.2	20	65.5	11	2.3	270		
	80	22.2	38.8	71	18.5	3	345		
SBS 80-370F	72	20	34.1	69	15	2.6	320		
	90	25	30.8	70	15	2.6	320		
	108	30	26.3	68	11	2.3	295		
	60	16.7	27.5	64.5	11	2.3	295		
	76	21.1	25.5	66	11	2.3	295		
	90	25	22.5	65.2	11	2.3	295		
	53	14.7	21.3	63	7.5	2.3	270		
	67	18.6	20	64	7.5	2.3	270		
	80	22.2	17.5	68	6.8	2.3	270		
	90	25	17.5	68	6.8	2.3	270		

Parameter Chart

Model	Capacity		Head	Speed	Eff.	Motor power	NPSH	Impeller diameter
	m³/h	L/S						
SBS 100-250E	115	31.9	21.2	80.7	11	2.9	254	
	144	40	18.8	81	11	2.9	254	
	172	48.1	15.5	81.7	11	2.9	254	
	112	31	17.5	79	11	2.9	254	
	140	38.8	15.8	81	11	2.9	254	
	167	46.5	13.2	77	11	2.9	254	
	100	27.8	14.5	77.8	7.5	2.9	219	
	126	35	13.5	79	7.5	2.9	219	
	150	41.7	11.9	77.6	7.5	2.9	219	
	97	26.8	12.2	75.5	7.5	2.9	219	
SBS 100-250F	120	33.8	13.2	73.5	11	2.4	254	
	145	40.2	9.5	75.5	11	2.4	254	
	98	27.2	18.8	80.5	11	2.4	254	
	147	40.8	15	79.5	11	2.4	254	
	90	25	16.3	78	7.5	2.4	236	
	112	31.2	14.5	79.5	7.5	2.4	236	
	135	37.4	12.7	77.2	7.5	2.4	236	
	85	23.6	15.7	77	7.5	2.2	219	
	106	29.4	12.5	78	7.5	2.2	219	
	128	35.5	11.3	75	7.5	2.2	219	
SBS 100-250F	75	20.8	12.1	75	5.5	2.1	201	
	94	26.1	11	76	5.5	2.1	201	
	111	31.4	9.6	75.2	5.5	2.1	201	

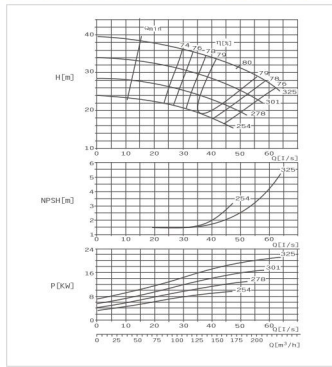
Dimensions

Model	Suction flange (mm)				Discharge flange (mm)				Pump size (mm)										WG1				
	DS	D1	D2	n-φd1	D3	D4	n-φd2	S2	m1	m2	n1	n2	b	a1	a2	l2	f	h1		h2	H	kg	
80-370	125	210	250	8-φ18	31	88	160	200	8-φ18	27	320	270	410	340	78	330	330	310	385	315	140	590	242
100-250	150	240	285	8-φ23	31	100	180	220	8-φ18	29	320	270	470	400	70	330	330	310	385	355	170	630	257

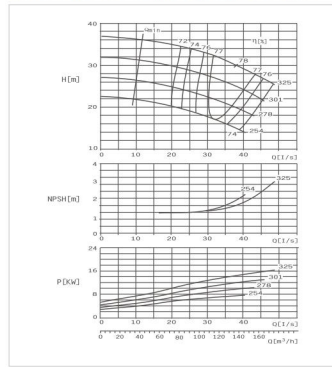
Installation dimensions

Model	Motor		b2	h4	h6	h7	B	L4	L5	i	q	Motor weight (kg)	Baseplate weight (kg)	Coupling size	Foundation bolts
	Frame Size	Power (kW)													
80-370	13.2A	7.5					658	970	385		525	88	121		
	16.9A	11					700	1050	425		665	132	127		
	16.0L	15	430	295	435	700	1100	450		70	665	150	131	Ø3*80	6-M16*350
	18.0A	18.5					720	1110	455		730	190	132		
100-250	18.0L	22					720	1173	475		730	206	133		
	12.2S	5.5	500	305	475	698	930	365		70	485	75	131		
	13.2A	7.5					698	970	385		525	88	133		
	16.9A	11					740	1040	430		665	132	138		
	16.0L	15					740	1100	450		665	150	142		

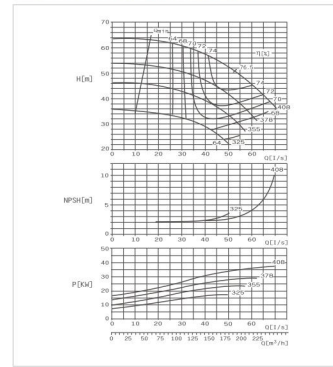
SBS100-310 E Performance Curve n=1450r/min



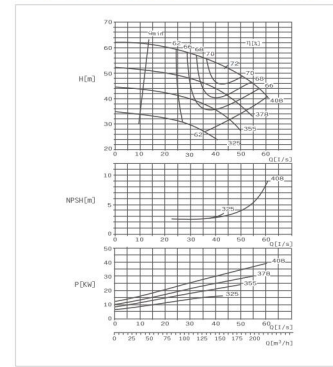
SBS100-310 F Performance Curve n=1450r/min



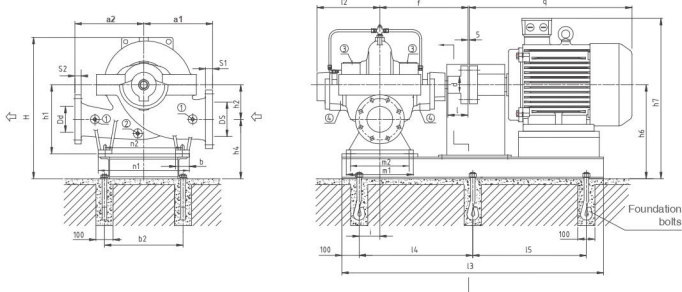
SBS100-375 E Performance Curve n=1450r/min



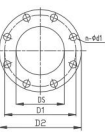
SBS100-375 F Performance Curve n=1450r/min



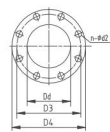
SBS Horizontal pump installation dimension drawing



Suction flange



Discharge flange



Connection Dimensions

- ① Pressure gauge Rp1/2
- ② Drain plug Rp1/2
- ③ Air vent Rp1/2
- ④ Leakage drains hole Rp3/4

Parameter Chart

Model	Capacity		Head	Speed	Eff.	Motor power	NPSH	Impeller diameter
	m³/h	L/S						
SBS 100-310E	148	411	34	1450	78.5	30	3.1	325
	185	513	31		80			
	222	617	28.8		77.5			
	133	36.8	29.3		79	18.5	2.7	301
	166	46.1	27		79.6			
	200	55.6	24.3		77.4			
	120	33.3	24.6		78			
	151	41.9	22.5		79.3	15	2.5	278
	180	50	20		77.4			
	112	31.2	20.2		77.8			
SBS 100-310F	148	389	18.5	1450	78	11	2.3	254
	162	44.9	16.2		78			
	172	31.2	32.5		76.6			
	140	38.9	29.5		78	18.5	2.7	325
	168	46.7	25		74			
	106	29.4	27.5		76.5			
	133	37	25.5		77.6	15	2.5	301
	160	44.4	22		75			
	100	27.8	25		76.2			
	124	34.4	21.2		77.3	11	2.4	278
SBS 100-375E	150	41.7	18		75			
	94	26.1	19.4		76.5			
	117	32.5	17		77	11	2.3	254
	140	38.9	15		76			

Parameter Chart

Model	Capacity		Head	Speed	Eff.	Motor power	NPSH	Impeller diameter
	m³/h	L/S						
SBS 100-375E	148	411	57	1450	73	45	3	408
	185	514	51		76.5			
	220	611	48		74			
	133	36.9	47.3		71	37	2.7	378
	167	48.4	46		74			
	200	55.6	38		72.3			
	124	34.4	41		67.5			
	155	42.1	38		71	30	2.5	355
	186	51.7	31		68			
	108	30	32.5		66.3			
SBS 100-375F	148	389	18.5	1450	73	18.5	2.1	325
	162	45	25.3		66.5			
	130	36.1	56.2		70			
	162	45	52		72	37	3.6	408
	195	54.2	45.8		67.5			
	114	31.7	47.5		66.5			
	142	39.4	44		69	30	3.3	378
	170	47.2	39		66.5			
	105	29.2	40		64.5			
	130	36.1	37.5		66.5	30	3	355
SBS 100-375F	157	43.6	32.5		64			
	92	25.6	30.8		61			
	115	31.9	28.7		63	18.5	2.7	325
	138	38.3	25		61.2			

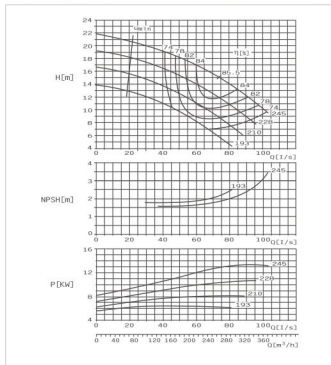
Dimensions

Model	Suction flange (mm)					Discharge flange (mm)					Pump size (mm)										WG1			
	D5	D1	D2	n-φd1	S1	D3	D4	D4	n-φd2	S2	m1	m2	n1	n2	b	a1	a2	φ	h1	h2		H	H	kg
100-310	150	240	285	8-φ23	31	100	180	220	8-φ18	29	320	270	470	400	70	330	330	310	385	355	170	630	262	
100-375	150	240	285	8-φ23	31	100	180	220	8-φ18	29	320	270	470	400	70	370	370	310	385	355	170	670	270	

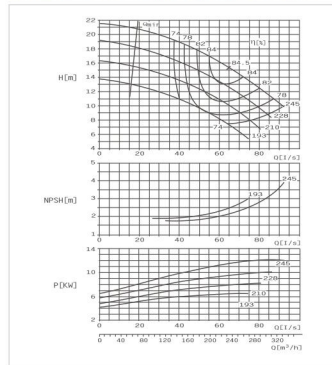
Installation dimensions

Model	n1 (mm)	Motor		h4	h6	h7	B	l4	l5	i	q	Motor weight (kg)	Baseplate weight (kg)	Coupling d/d	Foundation bolts	
		Frame Size	Power (kW)													
SBS 100-310	500	160L	11	305	475	740	1060	430				665	122	138	φ38x80	6-M20x80
		180M	18.5			740	1100	450				730	190	139		
		200L	30			760	1100	450			70	730	206	142		
		225L	37			785	1190	495				790	278	144		
		229M	45			810	1220	510				840	330	146		
												865	360	148		

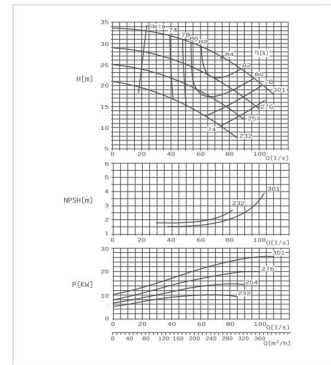
SBS125-230 E Performance Curve n=1450r/min



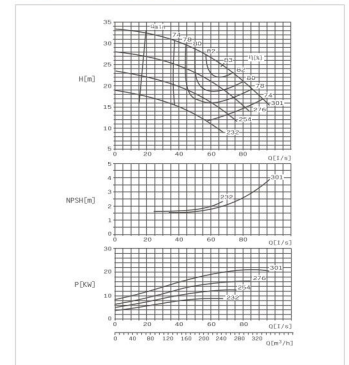
SBS125-230 F Performance Curve n=1450r/min



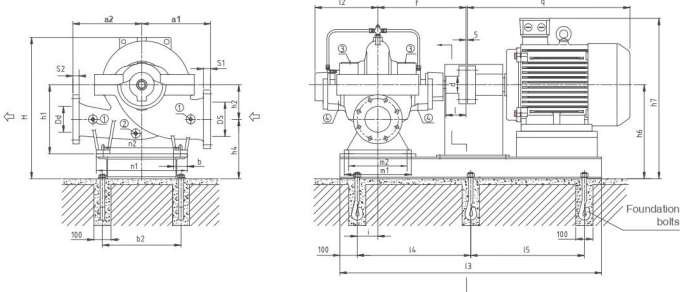
SBS125-290 E Performance Curve n=1450r/min



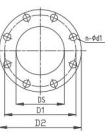
SBS125-290 F Performance Curve n=1450r/min



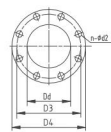
SBS Horizontal pump installation dimension drawing



Suction flange



Discharge flange



Connection Dimensions

- ① Pressure gauge Rp1/2
- ② Drain plug Rp1/2
- ③ Air vent Rp1/2
- ④ Leakage drains hole Rp3/4

Parameter Chart

Model	Capacity		Head		Speed	Eff.	Motor power	NPSH	Impeller diameter	
	m³/h	L/S	m	ft						
SBS 125-210E	220	611	17	56	1450	84	85.5	15	2.3	245
	274	761	14.8	49						
	328	911	12	39						
	193	53.6	15	49						
	241	66.9	13.2	43						
	184	511	12.6	39.4						
	235	63.9	10.6	35						
	277	76.9	8	26						
	167	46.4	10.3	34						
	209	58.1	8.7	28.5						
SBS 125-210F	250	69.4	6.8	22	1450	73	75	2.2	193	210
	190	52.8	17	55						
	239	66.1	11.5	38						
	307	85.3	11.5	38						
	170	47.2	15.4	50						
	212	58.9	13.5	44						
	255	70.8	11.4	37						
	144	40.6	13	43						
	205	56.9	11.5	38						
	246	68.4	9.2	30						
SBS 125-290E	156	42.2	10.5	34	1450	75	75	2.7	193	210
	195	54.2	9.1	30						
	220	61.9	7.7	25						
	174	48.3	23.4	80						
	218	60.6	21	72						
SBS 125-290F	207	57.5	13.3	44	1450	80	80	2.4	301	232
	241	66.9	25	81						
	290	80.6	21.3	66						
	174	48.3	23.4	80						
	218	60.6	21	72						
	261	72.5	17.5	56						
	157	43.6	19	78						
	196	54.4	17.5	79						
	235	65.3	15	48						
	138	38.3	15.1	48						
173	48.1	13.7	44							

Parameter Chart

Model	Capacity		Head		Speed	Eff.	Motor power	NPSH	Impeller diameter
	m³/h	L/S	m	ft					
SBS 125-290E	215	597	29.2	96	1450	82.3	30	2.4	301
	269	74.7	27	88					
	323	89.7	23.5	77					
	195	54.2	24.4	80.3					
	243	67.5	22	72					
	178	49.4	20	66					
	223	61.9	18	59					
	268	74.4	15.5	51					
	161	44.7	16.3	53					
	202	56.1	14.2	46					
SBS 125-290F	242	67.2	11.8	39	1450	76.2	15	2.3	232
	193	53.6	23.5	77					
	241	66.9	25	81					
	290	80.6	21.3	69					
	174	48.3	23.4	80					
	218	60.6	21	72					
	261	72.5	17.5	56					
	157	43.6	19	78					
	196	54.4	17.5	79					
	235	65.3	15	48					
SBS 125-290E	138	38.3	15.1	48	1450	74.3	11	2.2	232
	173	48.1	13.7	44					
	207	57.5	13.3	44					

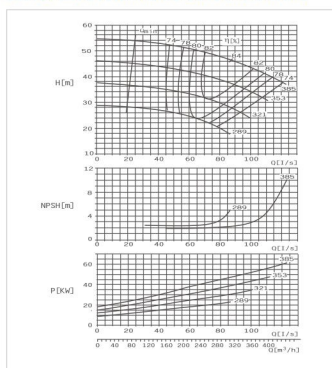
Dimensions

Model	Suction flange (mm)					Discharge flange (mm)					Pump size (mm)										WG1			
	D5	D1	D2	n-φd1	S1	D6	D3	D4	n-φd2	S2	m1	m2	n1	n2	b	a1	a2	φ	f	h1		h2	H	kg
125-230	200	295	340	12-φ23	35	125	210	250	8-φ18	31	390	340	530	450	80	370	370	370	370	515	400	200	680	350
125-290	200	295	340	12-φ23	35	125	210	250	8-φ18	31	390	340	530	450	80	370	370	370	370	515	400	200	680	360

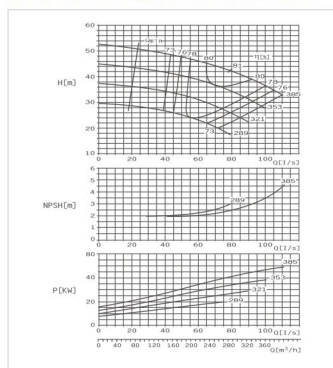
Installation dimensions

Model	Motor		b2	h4	h6	h7	B	L4	L5	i	q	Motor weight (kg)	Baseplate weight (kg)	Coupling φd	Foundation bolts
	Frame Size	Power (kW)													
666-FSL	666-FSL	132M	7.5	560	320	520	743	1100	495	105	225	28	121	φ44×100	6-M20×400
		160M	11												
		180L	15												
		180M	18.5												
		200L	22												
225L	31														

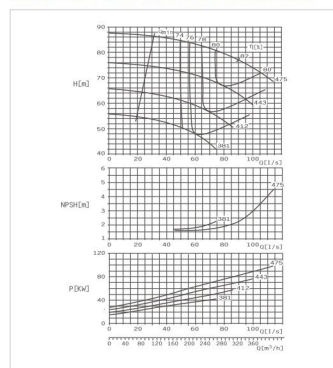
SBS125-365 E Performance Curve n=1450r/min



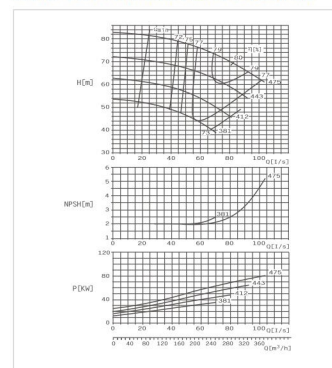
SBS125-365 F Performance Curve n=1450r/min



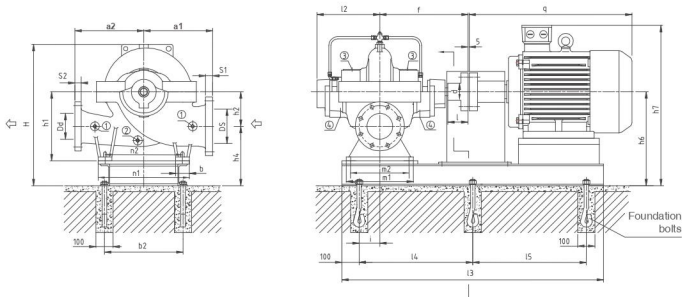
SBS125-500 E Performance Curve n=1450r/min



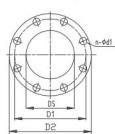
SBS125-500 F Performance Curve n=1450r/min



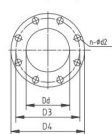
SBS Horizontal pump installation dimension drawing



Suction flange



Discharge flange



Connection Dimensions

- ① Pressure gauge Rp1/2
- ② Drain plug Rp1/2
- ③ Air vent Rp1/2
- ④ Leakage drains hole Rp3/4

Parameter Chart

Model	Capacity		Head	Speed	Eff.	Motor power	NPSH	Impeller diameter
	m ³ /h	L/S						
SBS 125-365E	245	68.8	58	82	55	2.6	385	
	310	86	47	86				
	360	100	44	82				
	225	62.4	41.6	80				
	281	78	35	81	45	2.8	353	
	337	93.6	35.6	82	37	2.9	321	
	205	56.8	33.7	78				
	256	71	31.5	82				
	307	85.2	28.2	79.5				
	184	51.2	25.5	76	22/30	3	289	
230	64	24	80					
278	76.8	20.9	78					
222	61.6	46.3	79.2					
277	77	43	81					
333	92.4	38.8	80	55	2.9	385		
202	56	39.8	78.5					
252	70	37	80	37	2.8	353		
302	84	32.8	79					
182	50.4	32.6	76.5					
227	63	30.5	78.5	30	2.8	321		
272	75.6	27.5	76					
198	44	26.3	77.8					
198	55	24.5	78	22	2.7	289		
238	66	21.8	75.2					

Parameter Chart

Model	Capacity		Head	Speed	Eff.	Motor power	NPSH	Impeller diameter
	m ³ /h	L/S						
SBS 125-500E	262	72.8	82	75.5				
	328	91	76	82	110	2.8	475	
	393	109.2	70	77.8				
	233	64.8	70	78.5				
	292	81	64.5	80	90	2.7	449	
	342	95	62	77.2				
	205	56.8	60	76				
	256	71	56	77	75	2.5	412	
	307	85.2	51.5	76				
	184	51.2	50	73.5				
230	64	47	76.5	45	2.5	381		
252	70	45	75					
235	65.2	75	77.7					
280	81.5	68.5	79	90	3.2	475		
352	97.8	63	77					
217	60.4	65	76.8					
272	75.5	68.5	78	75	2.9	449		
326	90.6	55	76					
181	50.4	57	75.1					
227	63	53	77	55	2.6	412		
272	75.6	48.3	75.8					
161	44.8	47.5	74					
202	56	45	76	37	2.5	381		
234	65	40	74					

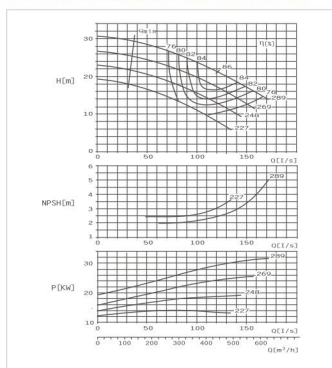
Dimensions

Model	Suction flange (mm)			Discharge flange (mm)				Pump size (mm)										WG1					
	DS	D1	D2	n-φd1	S1	D3	D4	n-φd2	S2	m1	m2	n1	n2	b	a1	a2	l2		f	h1	h2	H	kg
125-365	200	295	340	12-φ23	35	125	210	250	8-φ18	31	390	340	530	450	80	370	370	370	515	400	200	720	383
125-500	200	295	340	12-φ23	35	125	210	250	8-φ18	31	390	340	630	560	70	450	450	370	515	400	200	755	429

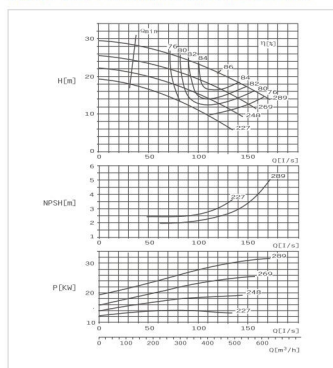
Installation dimensions

Model	Motor		b2	h4	h6	h7	B	l4	l5	i	q	Motor weight (kg)	Baseplate weight (kg)	Coupling dxd	Foundation bolts
	Frame Size	Power (kW)													
125-365	170	22										730	276	165	
	200	30				805	1290	540			790	278	165		
	225	37				855	1350	575		105	840	330	165		
	259	45	560	320	520	855	1380	590			865	365	168	φ44×100	6-H20×400
	289	55				905	1440	620			945	450	172		
	289	55				955	1500	620			990	440	168		
125-500	225	37				855	1350	575			840	330	165		
	259	45				905	1400	590			865	365	174		
	289	55	670	320	520	905	1440	620		105	945	450	180	φ44×100	6-H20×400
	289	55				955	1510	655			990	440	210		
	289	90		340	540	955	1560	680			990	722	215		
	315	118				1030	1630	715			1185	960	224		

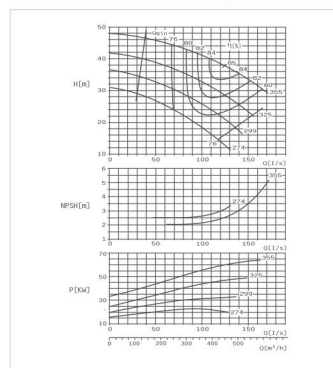
SBS150-290 E Performance Curve n=1450r/min



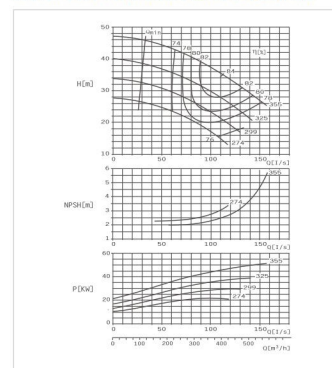
SBS150-290 F Performance Curve n=1450r/min



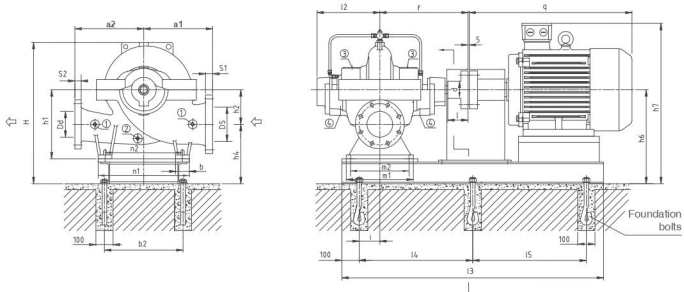
SBS150-360 E Performance Curve n=1450r/min



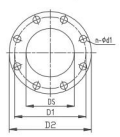
SBS150-360 F Performance Curve n=1450r/min



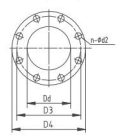
SBS Horizontal pump installation dimension drawing



Suction flange



Discharge flange



Connection Dimensions

- ① Pressure gauge Rp1/2
- ② Drain plug Rp1/2
- ③ Air vent Rp1/2
- ④ Leakage drains hole Rp3/4

Parameter Chart

Model	Capacity		Head	Speed	Eff.	Motor power	NPSH	Impeller diameter
	m ³ /h	L/S						
SBS 150-290E	3.54	98.3	24	1450	85.6	37	2.9	289
	4.43	123	21	87	83	30	2.9	269
	5.31	141.5	17.5	83.5	80	22	2.9	248
	3.23	89.7	21	83	82.3	30	2.9	269
	4.03	112	18	85	80	22	2.9	248
	4.84	124.4	15	82.3	79.4	30	2.9	269
	3.02	83.9	17.5	80	75	30	2.9	269
	3.78	105	15	84	77	18.5	3	227
	3.96	110	10	76	84.2	30	3	289
	3.17	88	23.4	84.2	80.5	30	3.1	269
	4.75	132	16.6	80.5	82.8	30	3.1	269
	3.02	84	20	82.8	80	30	3.1	269
3.78	105	17	85	80	22	3.1	248	
4.54	126	13.7	80	84	22	3.1	248	
3.59	97.2	11.5	77	79	15	3.1	227	
3.96	110	20.4	85	76.7	15	3.1	227	
4.25	117.5	11.3	79	80	15	3.1	227	
2.65	73.6	14	76.7	80	15	3.1	227	
3.31	92	11.5	80	76	15	3.1	227	
3.78	105	9.8	76					

Parameter Chart

Model	Capacity		Head	Speed	Eff.	Motor power	NPSH	Impeller diameter	
	m ³ /h	L/S							
SBS 150-360E	3.57	99.2	41.3	1450	83	85	75	3	355
	4.46	124	38	83	81.5	55	3	325	
	5.35	148.9	34.2	82.7	81.5	55	3	325	
	3.23	89.7	34.2	81.5	80.8	30	3	299	
	4.03	112	31	83	79	37	3	299	
	4.84	124.4	26.3	80.8	78.8	30	3	299	
	2.98	82.8	28.7	76.5	80.1	30	3.1	274	
	3.70	102.8	25	81	77.6	30	3.1	274	
	4.45	123.6	21	78.8	80.1	30	3.1	274	
	2.65	73.6	23.4	76.5	80.5	30	3.1	274	
	3.31	92	20	79	80.5	30	3.1	274	
	3.99	110.6	16.7	77.6	80.5	30	3.1	274	
3.25	90.3	39.2	80.1	80.5	30	3.1	274		
4.07	113	35	84	80.5	30	3.1	274		
4.89	135.6	30	81	80.5	30	3.1	274		
3.04	81.7	35	82.5	80.5	30	3.1	274		
3.67	102	29.5	80	80	30	3.1	274		
4.40	122.2	25	78.8	80	30	3.1	274		
2.67	74.2	21.5	78.8	80	30	3.1	274		
3.34	92.8	25	80	75.7	30	3	274		
4.00	111.1	21.3	78	75.7	30	3	274		
2.53	64.7	22.8	75.7	76	30	3	274		
2.92	81.1	20.5	78	76	30	3	274		
3.50	92.2	17.5	76						

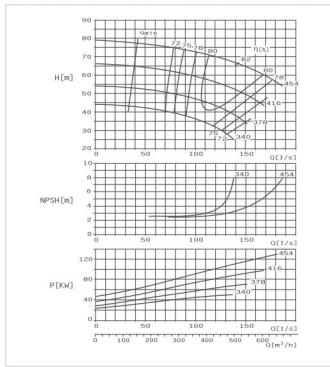
Dimensions

Model	Suction flange (mm)				Discharge flange (mm)				Pump size (mm)								WG1						
	DS	D1	D2	nc-d1	S1	D3	D4	nc-d2	S2	m1	m2	n1	n2	b	a1	a2		l2	f	h1	h2	H	kg
150-290	200	295	340	12-Φ23	35	150	240	285	8-Φ23	31	390	340	530	450	80	400	400	370	515	400	200	675	370
150-360	200	295	340	12-Φ23	35	150	240	285	8-Φ23	31	390	340	530	450	80	400	400	370	515	400	200	725	374

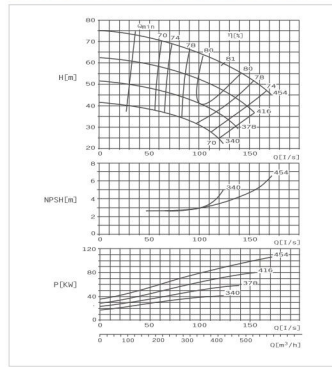
Installation dimensions

Model	Motor Frame Size	Power (kW)	b2	h4	h6	h7	l3	l4	l5	i	q	Motor weight (kg)	Baseplate weight (kg)	Coupling dxd	Foundation bolts	
																160L
SBS 150-290E	160L	15					785	1240	520			465	150	162	Φ44x100	6-M20x400
	180L	18.5					805	1300	540			730	160	164		
	200L	22					805	1320	560			730	205	167		
	225H	31.7	560	320	520	830	1320	560	575	105		790	278	168		
	259H	45	560	340	540	855	1350	575	600			840	330	173		
	280S	75	560	340	540	855	1380	590	620			865	360	172		
SBS 150-360E	259H	45	340	540	935	1320	660					945	450	175	Φ44x100	6-M20x400
	280S	75	340	540	935	1320	660					990	540	209		

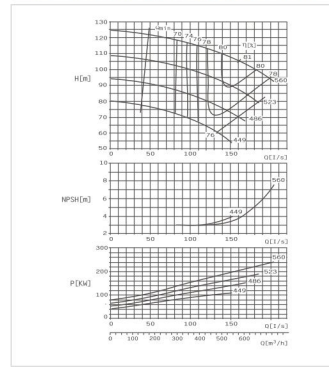
SBS150-460 E Performance Curve n=1450r/min



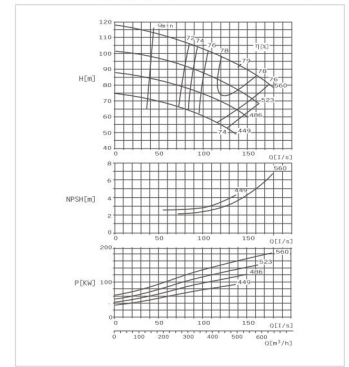
SBS150-460 F Performance Curve n=1450r/min



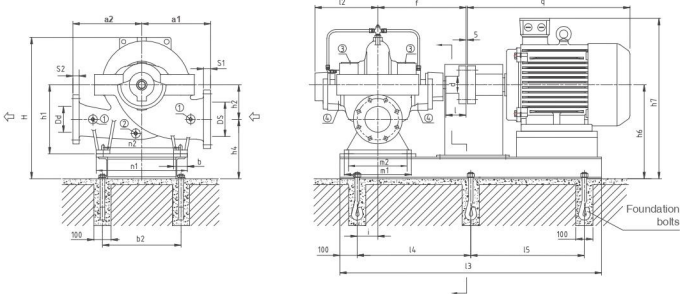
SBS150-605 E Performance Curve n=1450r/min



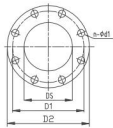
SBS150-605 F Performance Curve n=1450r/min



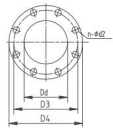
SBS Horizontal pump installation dimension drawing



Suction flange



Discharge flange



Connection Dimensions

- ① Pressure gauge Rp1/2
- ② Drain plug Rp1/2
- ③ Air vent Rp1/2
- ④ Leakage drains hole Rp3/4

Parameter Chart

Model	Capacity		Head	Speed	Eff.	Motor power	NPSH	Impeller diameter
	m ³ /h	L/S						
SBS 150-460E	412	114.4	71	1450	80.2	132	3.9	454
	515	143.1	66		80			
	618	171.6	60		80			
	377	104.7	58		79.3			
	472	131.1	54.5		81			
	566	157.2	48		78			
	346	96	47.5		78.5			
	422	120	41.5		80			
	527	146.4	33		78.7			
	328	89.7	54		78.7			
SBS 150-605E	484	134.4	44.5	1450	78	90	3.7	416
	300	82.3	44.4		78			
	375	104	40		80			
	450	125	34.5		78			
	260	72.2	35.5		74.8			
	324	90	33		78			
	390	108	28.4		74			
	328	89.7	54		78.7			
	490	136.1	78		80.5			
	576	160	70		78			

Parameter Chart

Model	Capacity		Head	Speed	Eff.	Motor power	NPSH	Impeller diameter
	m ³ /h	L/S						
SBS 150-605E	467	129.7	112	1450	78	81	250	4.2
	583	161.9	105		81			
	700	194.4	95.5		78			
	440	122.2	96		79			
	550	152.7	88.5		79			
	648	180	81		76.3			
	412	114.4	82		76.6			
	515	143	75		78			
	605	168	68		74			
	378	105	67.5		75.2			
SBS 150-605F	472	131.1	61.5	1450	77	110	3.5	449
	526	146.1	55.2		74			
	480	133.4	90		78.8			
	536	148.9	90		79			
	617	171.4	82		76			
	392	108.9	85		76.3			
	490	136.1	78		78			
	576	160	70		74.2			
	357	99.2	75		75.9			
	446	124	68.5		77			

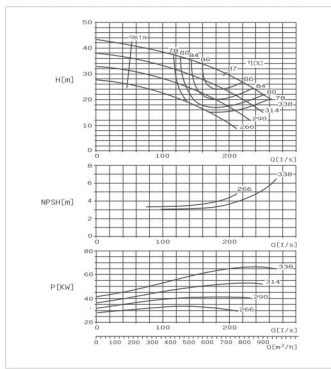
Dimensions

Model	Suction flange (mm)				Discharge flange (mm)				Pump size (mm)								WG1						
	DS	D1	D2	n-φd1	S1	D3	D4	n-φd2	S2	m1	m2	n1	n2	b	a1	a2		l	l1	h1	h2	H	kg
150-460	200	295	340	12-φ23	35	150	240	285	8-φ23	31	480	430	630	560	70	450	450	430	590	400	200	750	505
150-605	200	295	340	12-φ23	35	150	240	285	8-φ23	31	480	430	770	700	70	600	500	430	590	500	300	920	655

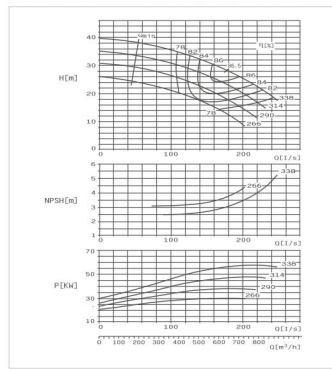
Installation dimensions

Model	Motor		b2	h4	h6	h7	B	L4	L5	i	q	Motor weight (kg)	Bessplate weight (kg)	Coupling dtd	Foundation bolts
	Frame Size	Power (kW)													
150-460	229W	45				875	1500	650				865	360	185	6-φ120×400
	259W	55				935	1560	680			945	450	189		
	280S	75	670	340	540	955	1630	715			990	640	219		
	289W	90				955	1680	740		150	990	722	232		
	315S	110				1030	1750	775			1185	860	252		
	319W	132				1030	1847	800			1325	1050	243		
150-605	315L	160	820	380	680	1030	1847	820		150	1325	1150	260		
	315S	110				1170	1750	775			1185	960	310		
	319W	132				1170	1800	800			1325	1050	322		
	315L	160-200				1170	1847	815			1325	1250	322		

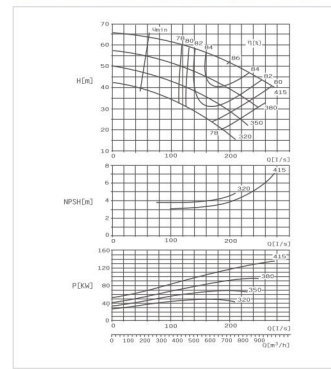
SBS200-320 E Performance Curve n=1450r/min



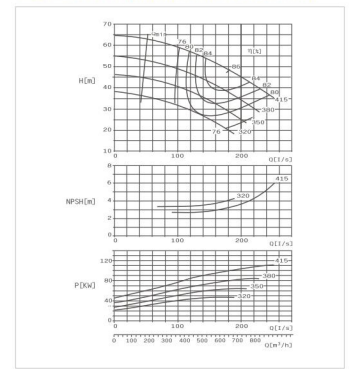
SBS200-320 F Performance Curve n=1450r/min



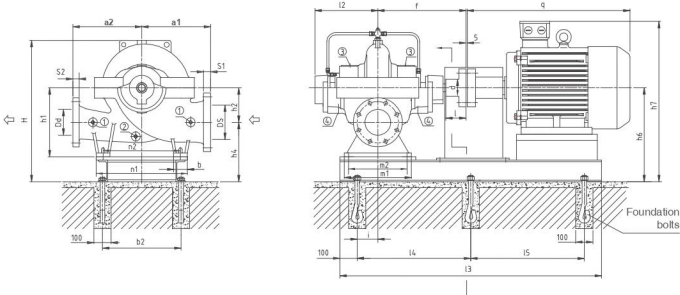
SBS200-420 E Performance Curve n=1450r/min



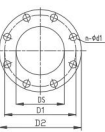
SBS200-420 F Performance Curve n=1450r/min



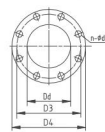
SBS Horizontal pump installation dimension drawing



Suction flange



Discharge flange



Connection Dimensions

- ① Pressure gauge Rp1/2
- ② Drain plug Rp1/2
- ③ Air vent Rp1/2
- ④ Leakage drains hole Rp3/4

Parameter Chart

Model	Capacity		Head	Speed	Eff.	Motor power	NPSH	Impeller diameter	
	m³/h	L/S							
SBS 200-320E	556	154.4	34	86	87.5	75	3.8	338	
	695	193	30	84.5					
	834	231.7	25	84					
	973	270.4	21	83.5		75	4	314	
	1112	309.1	17	83					
	1251	347.8	13	82.5					
	1390	386.5	9	82		45	4.1	290	
	1529	425.2	5	81.5					
	1668	463.9	1	81					
	1807	502.6		80.5					
SBS 200-420E	601	167	21.3	85					
	740	205.7	17.2	84					
	879	244.4	13.1	83.5					
	1018	283.1	9	83					
	1157	321.8	4.9	82.5					
	1296	360.5	0.8	82					
	1435	399.2		81.5					
	1574	437.9		81					
	1713	476.6		80.5					
	1852	515.3		80					
SBS 200-320F	475	132	28.5	89.8		86	55	3.2	314
	594	165	24.5	87.9					
	713	198	20	86.5					
	832	231	16	85.5					
	951	264	12	84.5					
	1070	297	8	84					
	1189	330	4	83.5					
	1308	363		83					
	1427	396		82.5					
	1546	429		82					
SBS 200-420F	445	123.6	23.8	91.3					
	554	157.2	19.7	89.8					
	663	190.8	15.6	88.5					
	772	224.4	11.5	87.5					
	881	258	7.4	86.5					
	990	291.6	3.3	85.5					
	1099	325.2		84.5					
	1208	358.8		84					
	1317	392.4		83.5					
	1426	426		83					

Parameter Chart

Model	Capacity		Head	Speed	Eff.	Motor power	NPSH	Impeller diameter
	m³/h	L/S						
SBS 200-320E	567	157.5	37	84.5				
	709	197	32	86.5		132	3.9	415
	850	236.1	27	84.5				
	991	275.1	22	82.5				
	1132	314.1	17	84.5				
	1273	353.1	12	83				
	1414	392.1	7	80.5				
	1555	431.1	2	81		75	3.9	350
	1696	470.1		81.6				
	1837	509.1		81				
SBS 200-420E	409	113.6	32.5	79				
	511	142	25.5	81		55	4	320
	613	170	18	80				
	715	198	11	81				
	817	226	4	84				
	919	254		85.5		110	3.5	415
	1021	282		83.5				
	1123	310		82				
	1225	338		84		90	3.5	380
	1327	366		81.5				
SBS 200-420F	421	118	28	80				
	530	147	21.5	82		75	3.7	350
	639	176	15	79.5				
	748	205	8	81				
	857	234	1	82.5				
	966	263		84				
	1075	292		85.5				
	1184	321		83.5				
	1293	350		82				
	1402	379		84				

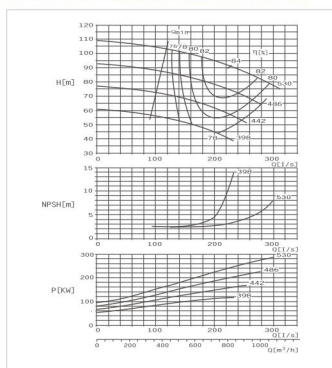
Dimensions

Model	Suction flange (mm)					Discharge flange (mm)					Pump size (mm)										WG1		
	DS	D1	D2	n-dx1	S1	D4	D3	D4	n-dx2	S2	m1	m2	n1	n2	b	a1	a2	l2	l	h1		h2	H
200-320	250	355	405	12-Q28	37	200	295	340	12-Q23	35	480	430	630	560	70	450	450	430	590	500	240	835	572
200-420	250	355	405	12-Q28	37	200	295	340	12-Q23	35	480	430	630	560	70	500	500	430	590	500	240	860	577

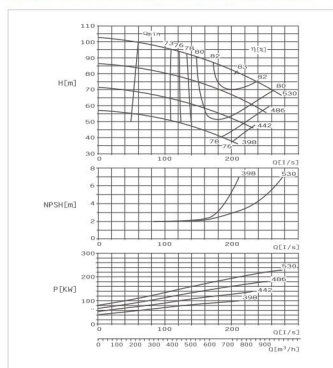
Installation dimensions

Model	Motor Frame Size (Power (kW))		b2	h4	h6	h7	B	L4	L5	i	q	Motor weight (kg)	Baseplate weight (kg)	Coupling size	Foundation bolts
	200L	320L													
SBS 200-320E	200L	6	22				950	1470	635		790	285	180		
	225L	37					975	1470	635		840	330	192		
	229M	45					975	1500	650		865	360	195		
	259M	55					1025	1560	680		945	450	200		
	280S	75					1055	1630	715	150	990	640	235		
	289M	90					1055	1660	740		990	722	240		
	315S	110					1130	1750	775		1185	960	250		
	319M	132					1130	1847	800		1325	1050	260		
	315L	160					1130	1847	800		1325	1150	260		

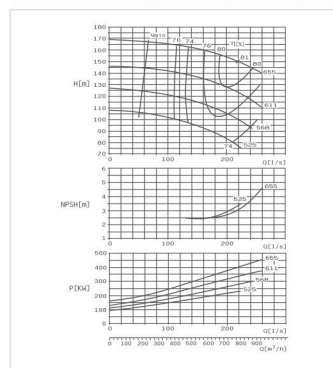
SBS200-520 E Performance Curve n=1450r/min



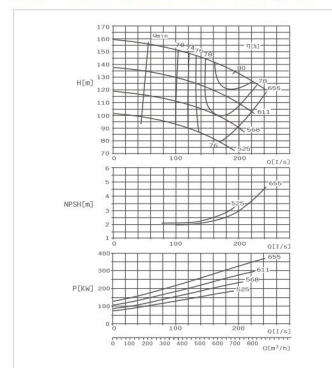
SBS200-520 F Performance Curve n=1450r/min



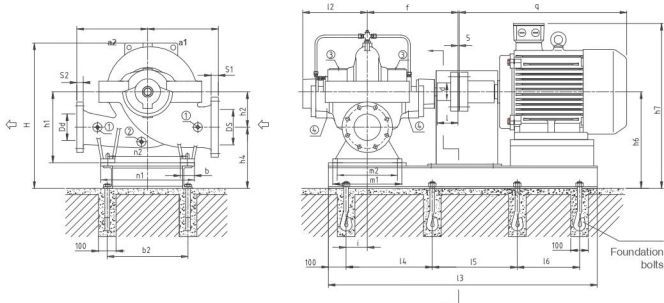
SBS200-670 E Performance Curve n=1450r/min



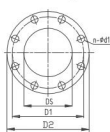
SBS200-670 F Performance Curve n=1450r/min



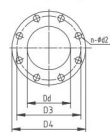
SBS Horizontal pump installation dimension drawing



Suction flange



Discharge flange



Connection Dimensions

- ① Pressure gauge Rp1/2
- ② Drain plug Rp1/2
- ③ Air vent Rp1/2
- ④ Leakage drains hole Rp3/4

Parameter Chart

Model	Capacity		Head	Speed	Eff.	Motor power	NPSH	Impeller diameter
	m³/h	L/S						
SBS 200-520E	654	181.7	97	1450	82.2	280	4	530
	817	227	91		84	315		
	980	272.2	85		81.5			
	605	168	82.5		80.2	220	4.5	486
	756	210	76.5		83	250		
	907	252	73		80.4			
	565	156.9	67		78.1	185	3.7	442
	706	196.1	62.5		81			
	847	235.2	55		78			
	518	144	52.3		75.5	132		
648	180	47.5		78.5		3.5	398	
778	216.1	42		76.2				
588	163.2	68		80.3	220			
734	204	81.7		83	250	3.5	530	
880	244.8	73.2		80.3				
556	154.4	74		79.6				
695	193	68		81	185	3.8	486	
834	231.7	60		79.5				
524	145.6	60		78.5		3.6	442	
655	182	55		80	160			
786	218.3	48.8		78				
478	132.8	48		76.8				
598	166	43.5		78		2.9	398	
717	199.2	38		76				

Parameter Chart

Model	Capacity		Head	Speed	Eff.	Motor power	NPSH	Impeller diameter
	m³/h	L/S						
SBS 200-670E	634	176	157.5	1450	77.7	500	3.6	655
	792	220	150		80			
	956	260	140		78.2			
	596	165.6	134.5		76.7	400	3.4	611
	745	206.9	127		78.5			
	862	248.3	114.5		76			
	702	195	107		77	315	3.2	568
	842	234	95.5		74.8			
	527	146.4	95.5		74.8			
	659	183	88		76	250	3	525
770	213.9	80		74				
576	160	142		77.2				
720	200	132.5		79	400	3.4	655	
864	240	120		76				
530	147.2	123		76.8				
662	181.9	114.5		78.5	315	3.3	611	
795	220.8	104		76				
491	136.9	106		76.1				
616	171.1	98.5		78	250	3.2	568	
750	200	90		76				
455	126.4	90		74.8				
569	158.1	85		77	200	2.9	525	
681	189.2	73		74				

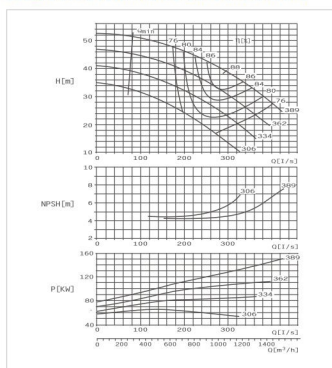
Dimensions

Model	Suction flange (mm)					Discharge flange (mm)					Pump size (mm)										WG1			
	DS	D1	D2	n-ød1	S1	D3	D4	D5	n-øD2	S2	m1	m2	n1	n2	b	a1	a2	ø	f	h1		h2	H	kg
200-520	250	355	405	12-ø28	37	200	295	340	12-ø23	35	480	430	770	700	100	650	550	475	655	560	300	980	800	
200-670	250	355	405	12-ø28	37	200	295	340	12-ø23	35	480	400	800	700	100	650	550	475	655	600	350	1085	914	

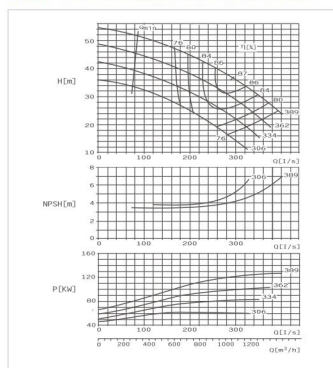
Installation dimensions

Model	Motor		h2	h4	h6	h7	j3	j4	j5	j6	j	q	Motor weight (kg)	Baseplate weight (kg)	Coupling d/d	Foundation bolts	
	Frame Size	Power (kW)															
200-520	315L	110											900	340		6-Ø120x600	
	315M	132											1050	340			
	315L	160-200	820	440	740	1230	1912	845				150	1325	1250	340		
	355M	220-250				1385	2036	600	600	600			1610	1725	345		
200-670	355L	280-315	850	440	790	1425	2036	600	600	600			1650	1960	355	8-Ø127x600	
	355L	280-315											1650	1960	355		

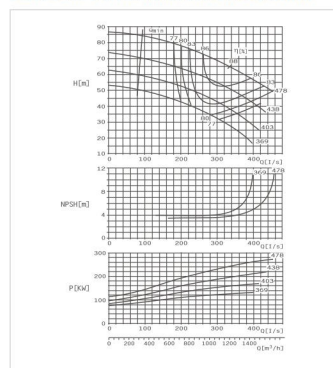
SBS250-370 E Performance Curve n=1450r/min



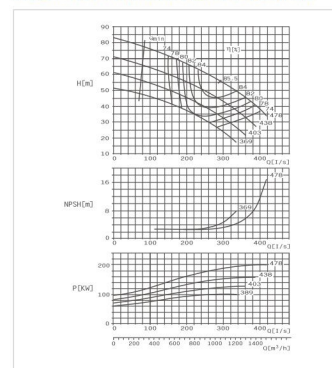
SBS250-370 F Performance Curve n=1450r/min



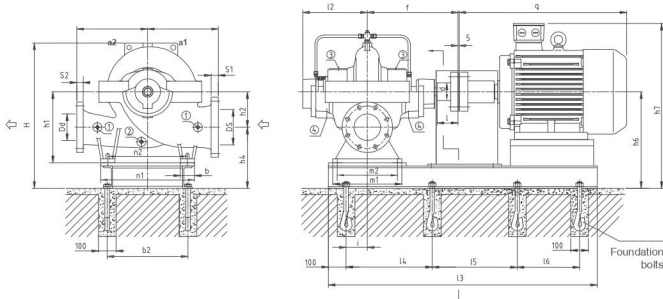
SBS250-480 E Performance Curve n=1450r/min



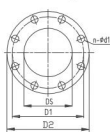
SBS250-480 F Performance Curve n=1450r/min



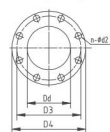
SBS Horizontal pump installation dimension drawing



Suction flange



Discharge flange



Connection Dimensions

- ① Pressure gauge Rp1/2
- ② Drain plug Rp1/2
- ③ Air vent Rp1/2
- ④ Leakage drains hole Rp3/4

Parameter Chart

Model	Capacity		Head	Speed	Eff.	Motor power	NPSH	Impeller diameter
	m³/h	L/S						
SBS 250-370E	840	233.3	44	80	160	4.7	389	
	1051	292	39	86	160	4.7	389	
	1260	350	33.5	86	160	4.7	389	
	795	220.8	37.5	82.3	90	5	362	
	994	276.1	33	86	132	5	362	
	1192	331.2	27.7	82.3	90	5	334	
	755	209.7	31.5	78	75	5	306	
	940	265.9	27	80	75	5	306	
	871	242	20	77.5	75	5	306	
	1098	280	16	76	75	5	306	
SBS 250-370F	821	228.6	42.3	84.5	132	4.7	389	
	1029	286	37	87	132	4.7	389	
	1235	343	31	89.3	132	4.7	389	
	775	215.3	37	82.3	90	4.7	362	
	968	268.9	32	86	110	4.7	362	
	1162	323.8	27	82.5	90	4.7	334	
	732	203.3	32	80	75	4.7	306	
	914	253.9	27	84	75	4.7	306	
	1097	304.8	22	80	77	4.7	306	
	680	188.9	25.6	77	75	4.7	306	

Parameter Chart

Model	Capacity		Head	Speed	Eff.	Motor power	NPSH	Impeller diameter
	m³/h	L/S						
SBS 250-480E	938	260.7	73.5	84.8	280	4.1	478	
	1173	326	66	86	280	4.1	478	
	1408	391	58	85	220	4	438	
	864	240	60.5	82.8	185	4	400	
	1080	300	55	86	132	4	369	
	1296	360	47.5	83	90	4	334	
	800	222.4	50	80	75	4	306	
	1000	278	45.5	81	75	4	306	
	1200	333.6	38	77.6	75	4	306	
	743	205.4	42	77	75	4	306	
SBS 250-480F	976	271	47	84	220	4.1	478	
	1044	290	55.5	84	220	4.1	478	
	1296	360	45	80	185	4.1	438	
	780	216.7	53.5	81	185	4.1	438	
	976	271	47	84	185	4.1	438	
	1173	325.2	42	82	132	3.6	400	
	708	196.7	45	78.6	78	3.6	369	
	885	246.1	40.5	80.5	78	3.6	369	
	1063	295.2	34	78	78	3.6	369	
	642	178.3	40	74	78	3.6	369	

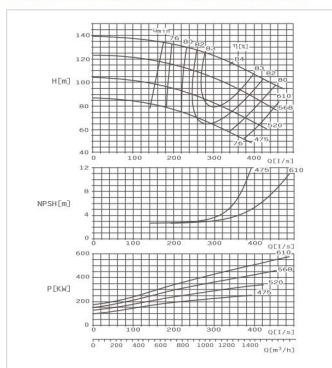
Dimensions

Model	Suction flange (mm)				Discharge flange (mm)				Pump size (mm)										WG1				
	DS	D1	D2	n-φd1	S1	D3	D4	n-φd2	S2	m1	m2	n1	n2	b	a1	a2	l	h1		h2	H	kg	
250-370	300	410	460	12-φ28	37	250	355	405	12-φ28	37	480	400	800	700	100	500	500	475	655	600	300	980	745
250-480	300	410	460	12-φ28	37	250	355	405	12-φ28	37	600	520	800	700	100	550	550	535	730	600	300	995	978

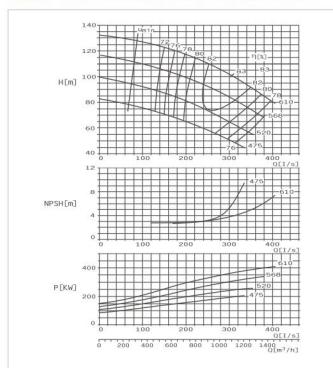
Installation dimensions

Model	Motor		b2	h4	h6	h7	l3	l4	l5	l6	l	q	Motor weight (kg)	Bessplate weight (kg)	Coupling dtd	Foundation bolts
	Frame Size	Power (kW)														
250-370	2895	75	850	480	780	1195	1690	745	---	150	990	640	409	222	423	6-M24x500
	2698	90	850	480	780	1195	1700	775	---	150	990	660	423	222	423	6-M24x500
	3194	132	850	480	780	1270	1810	805	---	150	1325	1950	423	1325	1950	423
	3155	160-200	850	480	780	1270	1912	845	---	150	1325	1950	440	1325	1950	440
	3155	110	850	480	780	1300	1950	875	---	150	1215	1960	409	1215	1960	409
250-480	3194	132	850	510	810	1300	2000	900	---	210	1325	1950	423	1325	1950	423
	3155	160-200	850	510	810	1300	2000	915	---	210	1325	1950	423	1325	1950	423
	3350	220-250	850	510	810	1495	2100	930	---	210	1650	1725	440	1650	1725	440
	3355	280-315	850	510	810	1495	2181	960	---	210	1650	1740	440	1650	1740	440

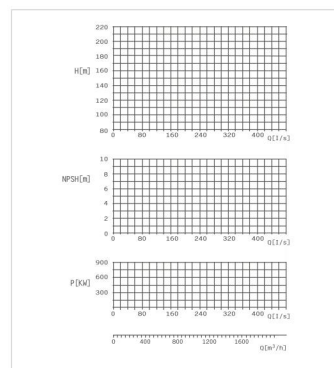
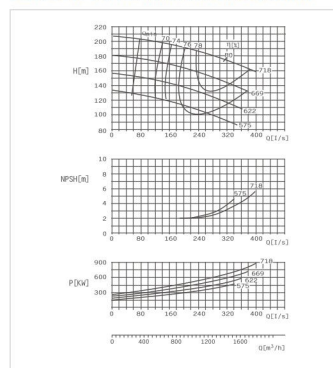
SBS250-600 E Performance Curve n=1450r/min



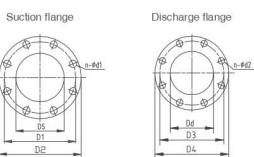
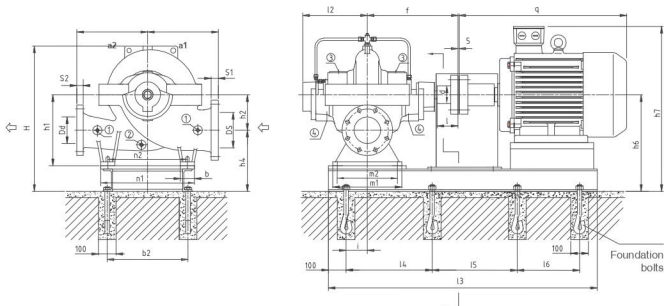
SBS250-600 F Performance Curve n=1450r/min



SBS250-710 E Performance Curve n=1450r/min



SBS Horizontal pump installation dimension drawing



- Connection Dimensions**
- ① Pressure gauge Rp1/2
 - ② Drain plug Rp1/2
 - ③ Air vent Rp1/2
 - ④ Leakage drains hole Rp3/4

Parameter Chart

Model	Capacity		Head	Speed	Eff.	Motor power	NPSH	Impeller diameter
	m³/h	L/S						
SBS 250-600E	994	276.1	126	83	86	560	4.6	610
	1242	345	116	82	560	4.6	610	
	1490	413.9	105	82	450	4.5	568	
	933	259.2	108	82.5	450	4.5	568	
	1166	323.9	100	81.5	450	4.5	568	
	1400	388.9	90	81.5	450	4.5	568	
	867	240.9	90	81.3	355	4.3	520	
	1084	301	82	81	355	4.3	520	
	1300	361.1	73.5	81	250	4	475	
	800	222.2	74	80.9	250	4	475	
SBS 250-710E	1000	273.8	66	82.5	400	3.7	610	
	1200	333.3	60	80.5	400	3.7	610	
	835	232	114	81.2	315	3.6	568	
	1044	290	104	81	315	3.6	568	
	1253	348	91.5	80.8	250	3.3	520	
	772	214.4	98	80.8	250	3.3	520	
	965	268.1	90	82.5	200	3.1	475	
	1158	321.6	80	81.9	200	3.1	475	
	700	194.4	80.3	80	150	2.8	425	
	875	241.1	74.5	81.5	150	2.8	425	

Parameter Chart

Model	Capacity		Head	Speed	Eff.	Motor power	NPSH	Impeller diameter
	m³/h	L/S						
SBS 250-710E	904	251	184	78.3	800	3.4	718	
	1130	314	175	80	800	3.4	718	
	1356	377	164	78.2	600	3	669	
	782	217	161	77.2	600	3	669	
	978	272	152	79	500	3.2	622	
	1174	326	141	78	500	3.2	622	
	738	205	136	76.5	400	3	575	
	922	256	128	77.5	400	3	575	
	1106	307	118	76.5	400	3	575	
	692	192	113	76.1	400	3	575	

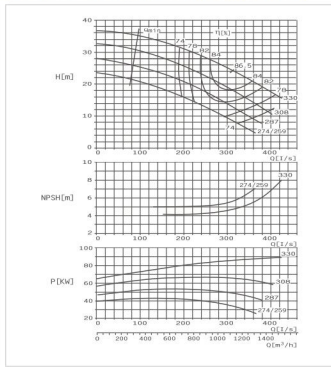
Dimensions

Model	Suction flange (mm)				Discharge flange (mm)				Pump size (mm)										WG1				
	DS	D1	D2	n-d1	S1	D3	D4	n-d2	S2	m1	m2	n1	n2	b	a1	a2	l2	f		h1	h2	H	kg
250-600	300	410	460	12-Φ38	37	250	355	405	12-Φ38	37	600	520	800	700	100	650	550	535	230	630	350	1095	881
250-710	300	430	485	16-Φ30	40	250	370	425	12-Φ30	40	600	520	1020	900	120	750	650	590	793	710	430	1290	950

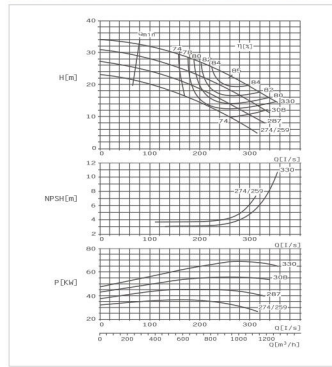
Installation dimensions

Model	Motor		b2	h4	h6	h7	l3	l4	l5	l6	l	q	Motor weight (kg)	Baseplate weight (kg)	Coupling dia	Foundation bolts
	Frame Size	Power (kW)														
250-600	315	200	850	490	840	1330	2030	915	---	1325	1250	433	6-Φ124×500			
	355M	220-250	850	490	840	1485	2100	630	630	210	1650	1725	438	8-Φ124×500		
	355L	280-355	850	490	840	1485	2180	660	660	210	1650	2150	451	8-Φ124×500		

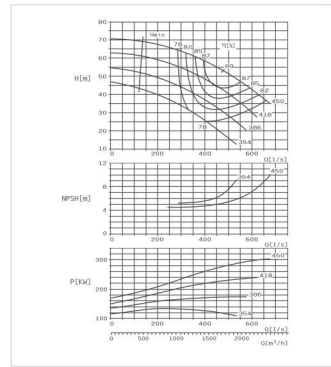
SBS300-300 E Performance Curve n=1450/min



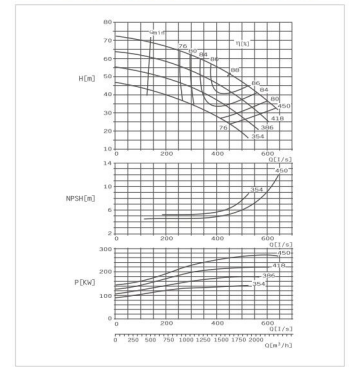
SBS300-300 F Performance Curve n=1450/min



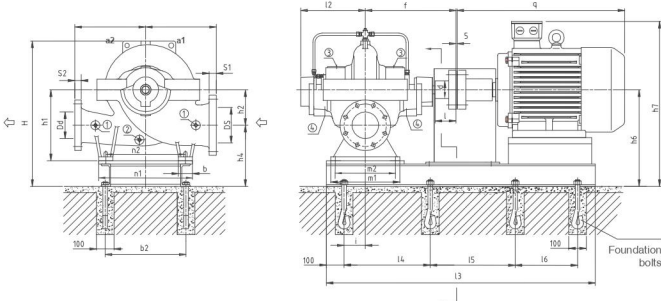
SBS300-435 E Performance Curve n=1450/min



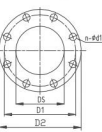
SBS300-435 F Performance Curve n=1450/min



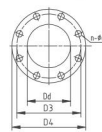
SBS Horizontal pump installation dimension drawing



Suction flange



Discharge flange



Connection Dimensions

- ① Pressure gauge Rp1/2
- ② Drain plug Rp1/2
- ③ Air vent Rp1/2
- ④ Leakage drains hole Rp3/4

Parameter Chart

Model	Capacity		Head	Speed	Eff.	Motor power	NPSH	Impeller diameter
	m³/h	L/S						
SBS 300-300E	878	244	28.8	62.3	86.5	110	5.3	330
	1098	305	24.5	80.3	80.5	75	5.5	308
	1318	366	20	80.3	80.5	75	5.5	308
	835	232	23.5	80.5	80.5	75	5.5	308
	1044	290	19.8	84.5	84.5	75	5.5	308
	1253	348	15	81	81	80	4.5	274
	886	224	19	79	79	80	4.5	274
	1093	280	15.5	82	82	80	4.5	274
	1210	336	11.4	78	78	80	4.5	274
	772	214	15	76	76	80	4.5	274
SBS 300-300F	795	208	26.2	80	80	75	4.1	330
	936	260	23	85	85	75	4.1	330
	1123	312	20	86	86	80	4.1	308
	691	192	24	80.5	80.5	84	4.1	308
	864	240	20	81	81	84	4.1	308
	1037	288	15.8	81	81	84	4.1	308
	639	178	20	76.5	76.5	80	4.2	287
	800	222	16.7	81	81	80	4.2	287
	960	267	13.5	79	79	80	4.2	287
	580	156	17.5	72	72	80	4.3	274

Parameter Chart

Model	Capacity		Head	Speed	Eff.	Motor power	NPSH	Impeller diameter
	m³/h	L/S						
SBS 300-435E	1342	373	60	85.5	89	315	7.1	430
	1677	466	52	85.5	84	250	7.2	418
	2072	579	46	86.5	84	200	7.4	386
	1262	350	52	84	84	160	7.4	354
	1577	428	45	86.5	86.5	150	7.4	354
	1892	526	37.5	84	84	120	7.4	354
	1181	328	42.5	80	80	100	6.9	430
	1476	410	36.5	84	84	100	6.9	430
	1771	492	28.5	80	80	100	6.9	430
	1088	302	33.8	76	76	160	7.4	354
SBS 300-435F	1350	378	27.5	79	79	160	7.4	354
	1530	425	24	78	78	160	7.4	354
	1396	360	51.5	84.8	84.8	315	6.9	430
	1620	450	51.5	88	88	315	6.9	430
	1944	560	43.5	84.5	84.5	250	6.9	418
	1215	338	51.5	83	83	250	6.9	418
	1519	422	45	86.5	86.5	250	6.9	418
	1823	506	37.5	84	84	200	6.9	386
	1138	316	43.5	80.5	80.5	200	6.9	386
	1422	395	37.5	84	84	160	6.9	386

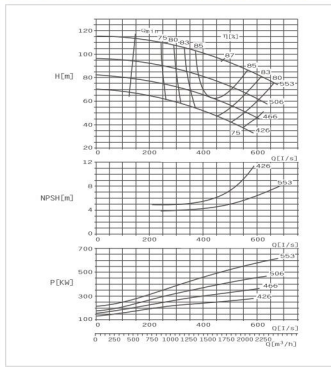
Dimensions

Model	Suction flange (mm)				Discharge flange (mm)				Pump size (mm)										WG1				
	DS	D1	D2	n-φd1	S1	D3	D4	n-φd2	S2	m1	m2	n1	n2	b	a1	a2	l2	l		h1	h2	H	kg
300-300	350	470	520	16-φ28	41	300	410	460	12-φ28	37	480	400	800	700	100	550	480	487	655	630	300	1040	810
300-435	400	525	580	16-φ31	43	300	410	460	12-φ28	37	600	520	800	700	100	650	540	515	730	670	350	1088	1151

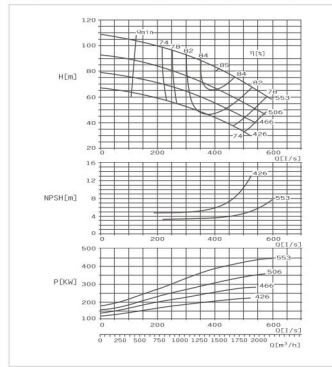
Installation dimensions

Model	Motor		b2	h4	h6	h7	l3	l4	l5	l6	l	i	q	Motor weight (kg)	Bessplate weight (kg)	Coupling dtd	Foundation bolts
	Frame Size	Power (kW)															
300-300	180L6	15	480	780	1045	1500	650	—	—	—	—	—	—	665	195	240	—
	200L4	22	480	780	1090	1500	650	—	—	—	—	—	—	790	205	245	—
	225M4	45	850	—	—	1155	1660	680	—	—	—	150	—	865	360	283	—
	250M4	55	850	—	—	1205	1600	710	—	—	—	—	—	945	400	291	—
	280S	75	510	810	—	1235	1690	745	—	—	—	—	—	990	440	340	—
	300M4	90	510	810	—	1335	1760	775	—	—	—	—	—	1040	470	348	—
300-435	315S	110	530	880	—	1310	1810	805	—	—	—	—	—	1215	560	357	—
	280S8	132	530	880	—	1370	1900	850	—	—	—	—	—	1245	600	441	—
	315M4	150	530	880	—	1370	2047	915	—	—	210	—	—	1325	1050	441	—
	315L	160	530	880	—	1370	2047	915	—	—	—	—	—	1325	1250	441	—
	330M4	220	530	880	—	1525	2180	930	630	630	—	—	—	1650	1775	445	—
	355L	280	530	880	—	1525	2180	930	660	660	—	—	—	1650	2150	498	—

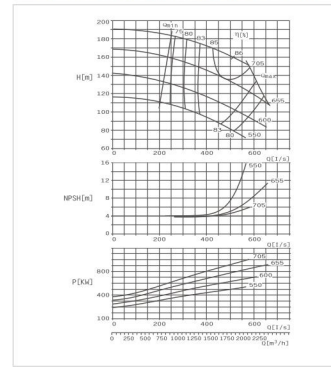
SBS300-560 E Performance Curve n=1450r/min



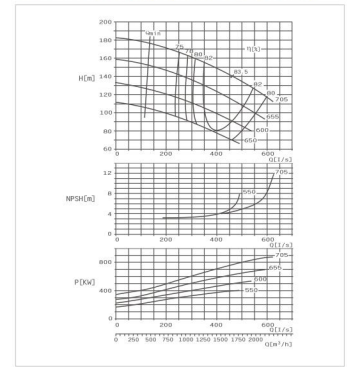
SBS300-560 F Performance Curve n=1450r/min



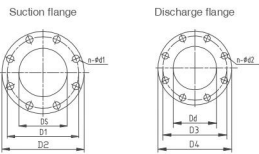
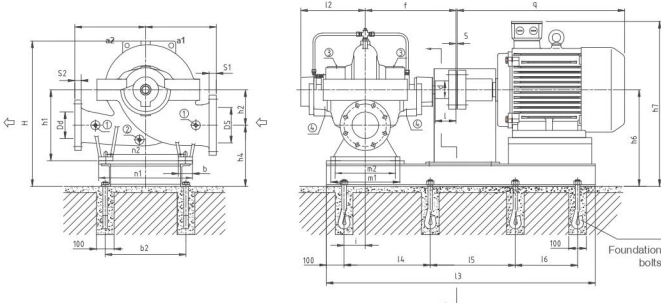
SBS300-700 E Performance Curve n=1450r/min



SBS300-700 F Performance Curve n=1450r/min



SBS Horizontal pump installation dimension drawing



Connection Dimensions

- ① Pressure gauge Rp1/2
- ② Drain plug Rp1/2
- ③ Air vent Rp1/2
- ④ Leakage drains hole Rp3/4

Parameter Chart

Model	Capacity		Head	Speed	Eff.	Motor power	NPSH	Impeller diameter
	m ³ /h	L/S						
SBS 300-560E	1377	388	101.5	1450	85.2	630	5.7	553
	2095	582	83.5		83.5			
	1316	366	83.5		83.8			
	1845	457	76		85.5			
	1974	548	67		83.3			
	1258	350	68		83			
	1373	437	62		85			
	1888	524	54		82			
	1213	337	57		81.2			
	1316	421	50		83.5			
SBS 300-560F	1819	505	42	1450	80	280	7.2	426
	1548	430	85		85			
	1858	516	78		83			
	1158	322	75		82.7			
	1447	402	67		83.5			
	1736	482	57		81.5			
	1089	302	64		81			
	1361	378	57		83			
	1633	454	50		81.5			
	1026	285	53		79.5			
SBS 300-700E	1282	356	47.5	1450	82	220	6.45	426
	1338	427	41		80.8			

Parameter Chart

Model	Capacity		Head	Speed	Eff.	Motor power	NPSH	Impeller diameter
	m ³ /h	L/S						
SBS 300-700E	1469	408	170	1450	84	1120	4.95	705
	2070	575	151		86			
	1388	386	147		84			
	1735	482	136		84.6			
	2092	578	125		83			
	1298	361	122		82.8			
	1623	451	112		84.3			
	1948	541	100		82			
	1230	342	100		82.2			
	1337	427	91		84			
SBS 300-700F	1845	512	80	1450	80.5	500/560	5	550
	1688	469	139		83.5			
	2026	563	124		81.5			
	1258	350	130		82			
	1573	437	119		83			
	1888	524	105		81			
	1160	322	108		81			
	1450	403	99		82.5			
	1740	483	87		80.5			
	1074	298	90		80.3			
SBS 300-700F	1342	373	81	1450	82	400	4.1	550
	1610	447	73.5		80.3			

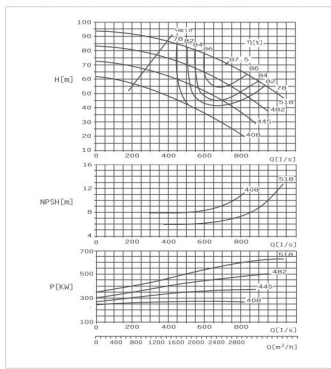
Dimensions

Model	Suction flange (mm)				Discharge flange (mm)				Pump size (mm)										WG1				
	DS	D1	D2	n-Ød1	S1	D3	D3	D4	n-Ød2	S2	m1	m2	n1	n2	b	a1	a2	Ø		f	h1	h2	H
300-560	400	525	580	16-Ø31	43	300	410	460	12-Ø28	37	600	520	1050	950	100	700	650	610	810	710	250	1150	1368
300-700	400	550	620	16-Ø36	48	300	430	485	16-Ø30	40	600	520	1050	950	100	750	650	630	810	750	400	1300	1964

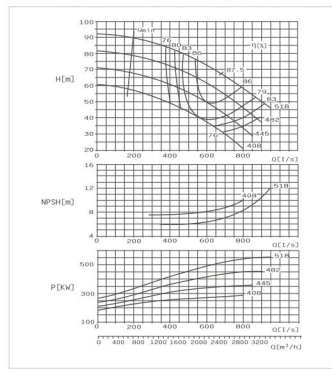
Installation dimensions

Model	Motor		b2	h4	h6	h7	l3	l4	l5	l6	l	q	Motor weight (kg)	Baseplate weight (kg)	Coupling Ød	Foundation bolts
	Frame Size	Power (kW)														
300-560	355H	220-250	1100	570	920	1565	2300						1725	504	Ø88x170	8-Ø27x600
	355L	280-355														

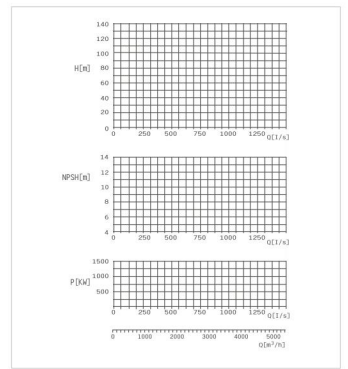
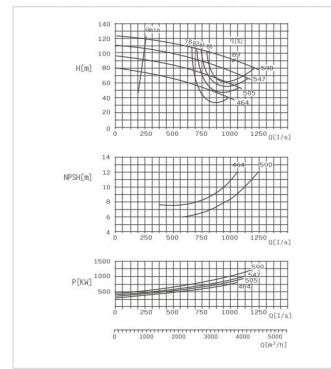
SBS350-510 E Performance Curve n=1450r/min



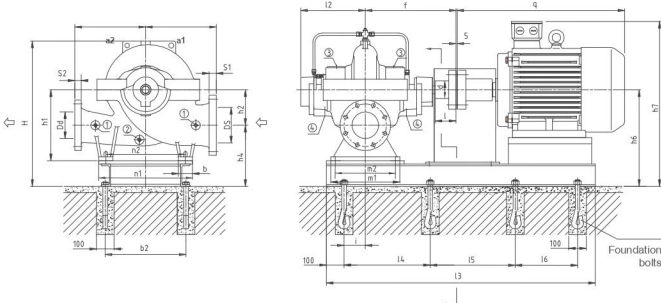
SBS350-510 F Performance Curve n=1450r/min



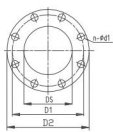
SBS350-590 E Performance Curve n=1450r/min



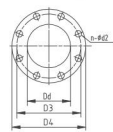
SBS Horizontal pump installation dimension drawing



Suction flange



Discharge flange



Connection Dimensions

- ① Pressure gauge Rp1/2
- ② Drain plug Rp1/2
- ③ Air vent Rp1/2
- ④ Leakage drains hole Rp3/4

Parameter Chart

Model	Capacity		Head	Speed		Eff.	Motor power	NPSH	Impeller diameter
	m³/h	L/S		m	r/min				
SBS 350-510E	2088	580	89	86	630	10	518		
	2610	725	70	86.5					
	3132	870	68	84.7					
	1944	540	68	84.5	500	10.7	482		
	2410	675	68	87					
	2916	810	59	84					
	1786	496	57.5	81	400	11	445		
	2232	620	50	86					
	2678	744	40	81					
	1656	460	45	76	315	11.5	408		
	2070	575	38	79					
	2484	690	30	77					
SBS 350-510F	1958	544	78	87	560	9.9	518		
	2448	680	67	86					
	2918	816	57	86					
	1818	504	62.5	85	450	10.2	482		
	2268	630	59.5	87					
	2722	756	50	85					
	1670	464	58	82.5	400	10.4	445		
	2088	580	50	85					
	2506	696	41.5	82.5					
	1555	432	47.5	78	315	10.7	408		
	1944	540	41.5	80					
	2331	648	34.5	80					

Parameter Chart

Model	Capacity		Head	Speed		Eff.	Motor power	NPSH	Impeller diameter
	m³/h	L/S		m	r/min				
SBS 350-590E	3036	843	86.5	80	783				
	3795	1054	89	80	1250	9.9	590		
	4500	1250	88	81					
	2834	787	85.1	77.2	1080	10.7	547		
	3543	984	87	79					
	4162	1156	84	78					
	2604	723	81	76.5					
	3235	904	86	77.5	710	11	505		
	3906	1085	82	76.5					
	2556	710	78.5	76.1	560	11.5	464		
	3020	839	79	76.5					
	3621	1006	77.5	75.5					

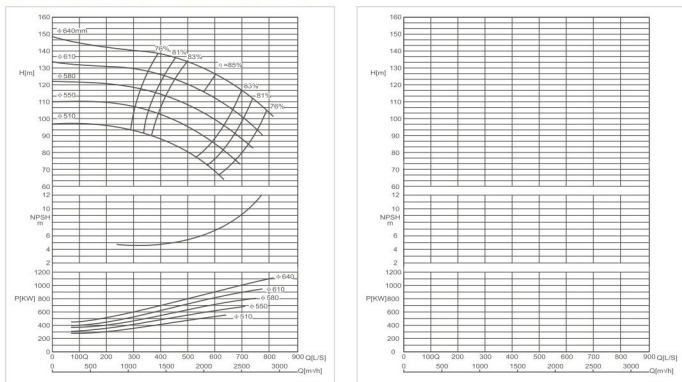
Dimensions

Model	Suction flange (mm)			Discharge flange (mm)				Pump size (mm)											WG1				
	DS	D1	D2	n-dx1	S1	D3	D4	n-dx2	S2	m1	m2	n1	n2	h	a1	a2	b	f		h1	h2	H	kg
350-510	450	585	640	20-Φ30	44	350	470	520	16-Φ28	41	600	520	1050	950	100	700	650	620	810	750	400	1290	1996
350-590	500	650	715	20-Φ34	56	350	470	520	16-Φ28	41	930	810	1050	830	120	731	650	720	910	760	410	1290	2150

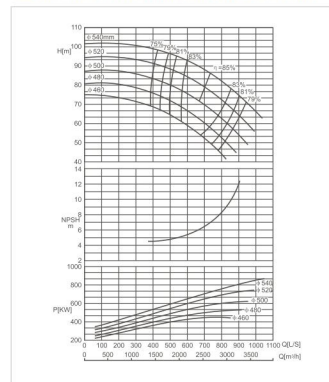
Installation dimensions

Model	Motor		b2	h4	h6	h7	l3	l4	l5	l6	l	q	Motor weight (kg)	Baseplate weight (kg)	Coupling dia	Foundation bolts
	Frame Size	Power (kW)														
350-510	355L	280-355	1100	560	960	1605	2100	700	700	210	1325	2150	537		Φ84×170	8-Φ27×600

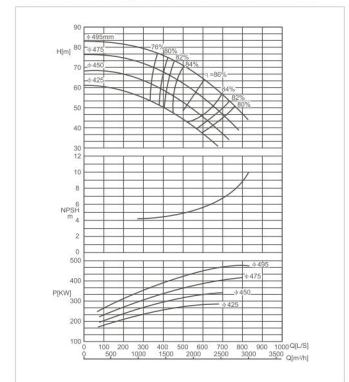
SBS350-620 E Performance Curve n=1450r/min



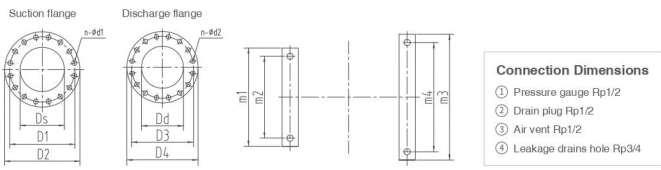
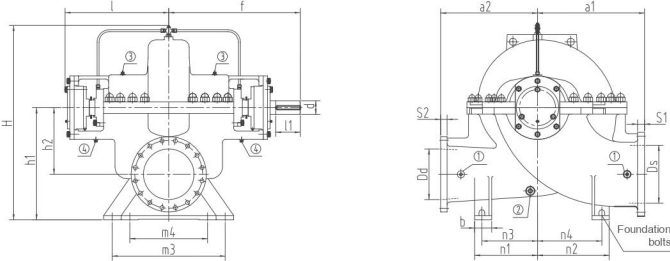
SBS400-540 E Performance Curve n=1450r/min



SBS400-540 F Performance Curve n=1450r/min



SBS Horizontal pump installation dimension drawing



Parameter Chart

Model	Capacity		Head	Speed	Eff.	Motor power	NPSH	Impeller diameter
	m³/h	L/S						
SBS 350-620E	1320	366.7	139	76				
	2200	611.1	125	85	1000	7	640	
	2640	733.3	111	81				
	3200	333.3	129	76				
	2100	583.3	116	85	900	6.5	610	
	2500	694.4	104	81				
	1130	313.9	118	76				
	1900	527.8	107	1450	85	800	5.8	580
	2350	652.8	93	82.5				
	1180	385.6	108	76				
SBS 400-540E	1800	508.3	94	84	630	5.5	550	
	2300	638.9	80	81				
	1020	283.3	94	76				
	1700	472.2	83	84	560	5.2	510	
	2150	597.2	69	78				
	1570	436.1	98.5	76.5				
	2630	750.6	86	85	800/900	7	640	
	3420	950	70	79				
	1580	416.7	91	76				
	2500	694.4	79.5	85	710/800	6.5	520	
SBS 400-540F	2250	902.8	64	79				
	1400	400	88	75				
	2400	666.7	72	85	630	6	500	
	3120	866.7	57	79				
	1380	383.3	76	75				
	2050	600.3	64	84	560	5.8	480	
	1500	813.3	50	79				
	1330	360.4	69	75				
	2210	613.9	58	83	500	5.5	460	
	2890	800	44	78				
SBS 400-540F	1320	366.7	77	76				
	2200	611.1	63.5	86	500	5.6	495	
	2860	795.4	48	79				
	1260	350	69.5	76				
	2100	583.3	57	85	450	5.5	475	
	2730	758.3	41.5	78				
	1200	333.3	53.6	76				
	1990	552.8	49.5	83.5	355	5.2	450	
	2580	694.4	37	77				
	1110	308.3	54	75				
1850	513.9	43	83	315	5	425		
2340	650	33	76					

Parameter Chart

Model	Capacity		Head	Speed	Eff.	Motor power	NPSH	Impeller diameter
	m³/h	L/S						
SBS 350-620E	1320	366.7	139	76				
	2200	611.1	125	85	1000	7	640	
	2640	733.3	111	81				
	3200	333.3	129	76				
	2100	583.3	116	85	900	6.5	610	
	2500	694.4	104	81				
	1130	313.9	118	76				
	1900	527.8	107	1450	85	800	5.8	580
	2350	652.8	93	82.5				
	1180	385.6	108	76				
SBS 400-540E	1800	508.3	94	84	630	5.5	550	
	2300	638.9	80	81				
	1020	283.3	94	76				
	1700	472.2	83	84	560	5.2	510	
	2150	597.2	69	78				
	1570	436.1	98.5	76.5				
	2630	750.6	86	85	800/900	7	640	
	3420	950	70	79				
	1580	416.7	91	76				
	2500	694.4	79.5	85	710/800	6.5	520	
SBS 400-540F	2250	902.8	64	79				
	1400	400	88	75				
	2400	666.7	72	85	630	6	500	
	3120	866.7	57	79				
	1380	383.3	76	75				
	2050	600.3	64	84	560	5.8	480	
	1500	813.3	50	79				
	1330	360.4	69	75				
	2210	613.9	58	83	500	5.5	460	
	2890	800	44	78				
SBS 400-540F	1320	366.7	77	76				
	2200	611.1	63.5	86	500	5.6	495	
	2860	795.4	48	79				
	1260	350	69.5	76				
	2100	583.3	57	85	450	5.5	475	
	2730	758.3	41.5	78				
	1200	333.3	53.6	76				
	1990	552.8	49.5	83.5	355	5.2	450	
	2580	694.4	37	77				
	1110	308.3	54	75				
1850	513.9	43	83	315	5	425		
2340	650	33	76					

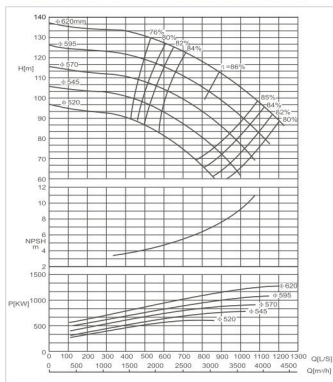
Dimensions

Model	Pump size (mm)													WGT			
	m1	m2	m3	m4	n1	n2	n3	n4	b	a1	a2	l	f		h1	h2	H
350-620	650	560	900	810	435	495	385	445	120	740	670	720	910	775	460	1330	2120
400-540	840	720	1090	970	565	615	455	505	220	730	700	695	870	820	460	1320	2380

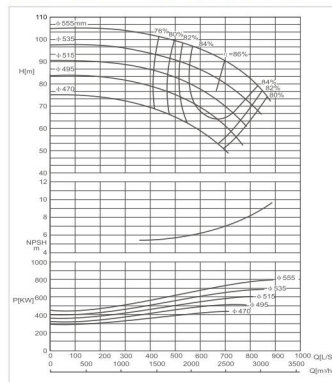
Connection dimensions

Model	Suction flange (mm)					Discharge flange (mm)					d&l of pump side coupling	Foundation bolts
	Ds	D1	D2	n-Dd1	S1	Dd	D3	D4	n-Dd2	S2		
350-620	400	525	580	16-φ30	43	350	470	520	16-φ25	41	φ95x170	4-M24x500
400-540	500	650	715	20-φ34	46	400	525	580	16-φ30	43	φ85x170	4-M36x600

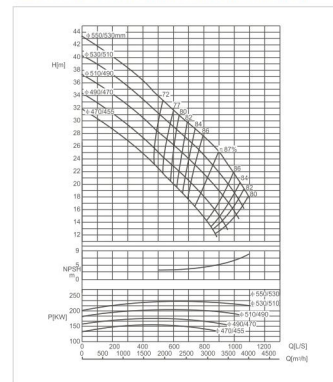
SBS400-620 E Performance Curve n=1450r/min



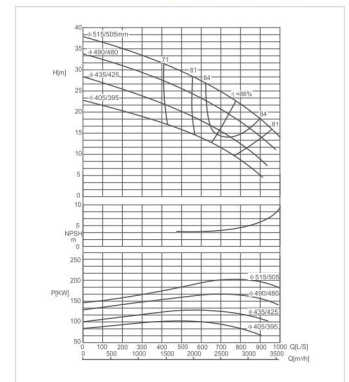
SBS400-620 F Performance Curve n=1450r/min



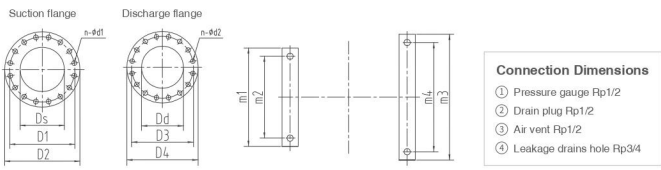
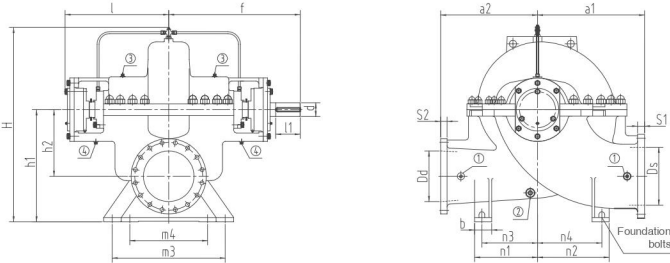
SBS500-510 E Performance Curve n=960r/min



SBS500-510 F Performance Curve n=960r/min



SBS Horizontal pump installation dimension drawing



Parameter Chart

Model	Capacity		Head	Speed	Eff.	Motor power	NPSH	Impeller diameter
	m³/h	LS						
SBS 400-620E	1100	525	124.5	76	76	1250/1400	7.5	620
	1100	875	113	86	86			
	1100	1319	95	95	95			
	1020	507	111	76	76	1120	7	595
	1020	839	103	85	85			
	1020	1089	83	92	92			
	1020	1481	109	85	85			
	2095	804	92	85	85	1120	6.7	570
	2750	1064	87	85	85			
	1600	458	99	79	79			
	1580	439	89	80	80	800	6	545
	2050	731	72	85	85	710	5.7	520
1850	850	61.5	80	80				
1500	417	101.5	79	79	800	6.8	555	
2485	690	90	80	80				
2110	467	82	85.8	85.8				
1440	400	94	76	76	710	6.5	535	
2845	875	66	79	79				
1440	450	79	75.8	75.8				
2310	642	74.5	75	75	630	5.5	515	
2845	790	65	78	78				
1330	369	79.8	75	75	560	5.3	495	
2220	617	67.5	85	85				
2700	750	54	77	77				
1265	351	70.5	74	74				
2110	586	69	85	85	500	5	470	
2320	760	49.8	77	77				

Parameter Chart

Model	Capacity		Head	Speed	Eff.	Motor power	NPSH	Impeller diameter
	m³/h	LS						
SBS 500-510E	1945	549	31	73	73			
	3240	900	25	87	87	280	5.5	530
	3925	1090	18	80	80			
	1855	515	31	72	72	250	4.5	510
	3095	860	25	87	87			
	3800	1056	16.5	80	80			
	1785	455	28.5	72	72	220	4	490
	2975	826.4	21	87	87	200	4	470
	1680	466.7	23.2	72	72			
	2800	778	18.5	87	87	200	4	470
	3420	950	13	78	78			
	1600	444.4	24	70	70	160	3.6	445
2670	742	16.5	86	86				
3150	815	12	77	77				
1445	407	31.3	71	71	220	4.8	505	
2775	771	22.5	86	86	200	4	480	
3600	1000	14	79	79				
1465	407	27.5	71	71	200	4	480	
2638	732	19.5	86	86				
3430	953	13	78	78				
1505	418	21.8	86	86	160	4	425	
2450	681	15.8	85.5	85.5	140	4	425	
3185	885	9.3	78	78				
1365	379	13.5	69	69	132	4	395	
2280	633	13.2	84	84				
2965	824	8	77	77				

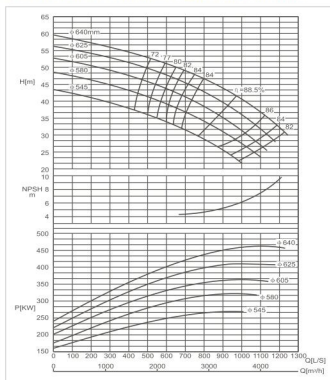
Dimensions

Model	Pump size (mm)													WGT			
	m1	m2	m3	m4	n1	n2	n3	n4	b	a1	a2	l	f		h1	h2	H
400-620	840	720	1090	990	565	665	455	555	220	800	700	775	955	850	490	1455	2760
500-510	940	830	1240	1140	360	510	250	400	220	850	750	850	1025	900	475	1530	2304

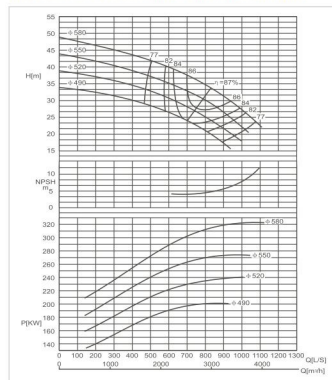
Connection dimensions

Model	Suction flange (mm)					Discharge flange (mm)					ISdI of pump side coupling	Foundation bolts
	Ds	D1	D2	n-#d1	S1	D3	D4	n-#d2	S2			
400-620	500	650	715	20-#34	46	400	525	580	16-#30	43	φ95x170	4-M30x600
500-510	600	770	840	20-#37	55	500	650	715	20-#34	46	φ75x140	4-M36x600

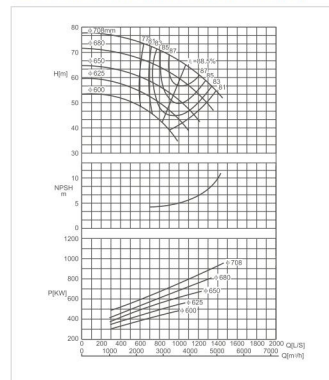
SBS500-640 E Performance Curve n=960r/min



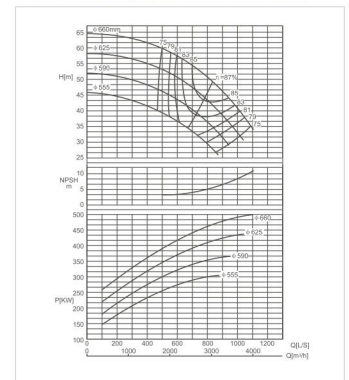
SBS500-640 F Performance Curve n=960r/min



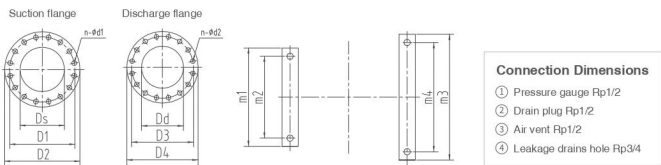
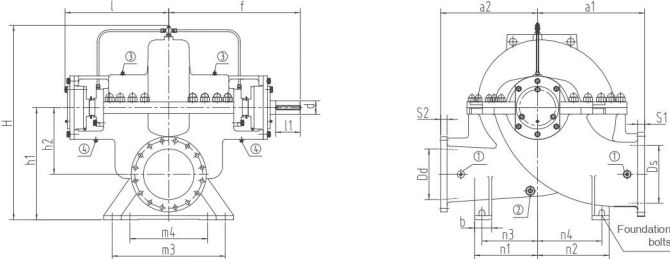
SBS500-700 E Performance Curve n=960r/min



SBS500-700 F Performance Curve n=960r/min



SBS Horizontal pump installation dimension drawing



Parameter Chart

Model	Capacity		Head	Speed	Eff. %	Motor power kW	NPSH m	Impeller diameter mm
	m³/h	LS						
SBS 500-640E	1925	521	52.5	960	72	500	6	640
	3528	980	41.5	88.5	500	6	640	
	4920	1200	35	81	450	5	625	
	1800	500	50	72	400	5	605	
	3340	928	38.7	88	400	5	605	
	4210	1169	28.5	82	315	4.5	545	
	3170	475	46.5	72	315	4.5	545	
	3170	881	3.6	88	400	5	605	
	4010	1119	26.5	81	315	4.5	545	
	1620	450	42.5	72	315	4.5	545	
	3020	839	31.2	87.5	355	4.7	580	
	3830	1064	25	83	280	4.3	520	
1310	425	37.5	72	280	4.3	520		
2800	778	29.8	87	280	4.3	520		
3600	1000	22	80	250	4	490		
1800	500	42	77	250	4	490		
2990	831	34	87	355	5	580		
3880	1079	23	77	280	4.3	520		
1700	472	3.8	76	280	4.3	520		
2835	788	30.2	86	315	4.5	550		
3185	1024	21	75	280	4.3	520		
1640	456	33.8	75	280	4.3	520		
2730	758	27.8	86	280	4.3	520		
3510	975	18.5	79	250	4	490		
1545	429	20.6	74.5	250	4	490		
2575	715	24	85	250	4	490		
3280	911	18	74.5	250	4	490		

Parameter Chart

Model	Capacity		Head	Speed	Eff. %	Motor power kW	NPSH m	Impeller diameter mm
	m³/h	LS						
SBS 500-700E	2270	651	55	960	72	500	6	708
	3850	1069	65	88.5	500	6	708	
	5060	1400	56	80	450	5.2	680	
	2200	611	67.5	77	400	5	650	
	3670	1019	56.5	88	400	5	650	
	4770	1325	48	79	315	4.5	600	
	2050	569	61	76	315	4.5	600	
	3420	950	53	87	315	4.5	600	
	4330	1208	42.5	78	280	4.3	550	
	1920	533	55.7	75	280	4.3	550	
	3200	889	47.8	86	350	4.5	625	
	3960	1190	39	77	350	4.5	625	
1810	503	50	74	350	4.5	625		
3020	819	42	85	500	4.5	600		
3560	989	35	76	400	5	650		
1800	500	60	75	400	5	650		
3005	835	49	87	500	6	660		
3905	1095	35	75	400	5	650		
1680	467	53.5	74	280	4.3	520		
2800	778	44.2	86	315	4.5	550		
3160	1011	32.5	75	280	4.3	520		
1600	444	47.5	73	280	4.3	520		
2640	733	38.4	85	400	4.3	590		
3360	933	29.2	74	350	4.5	625		
1450	401	43.4	72	250	4	490		
2410	669	34.5	84	355	4	555		
3132	879	28.5	74	250	4	490		

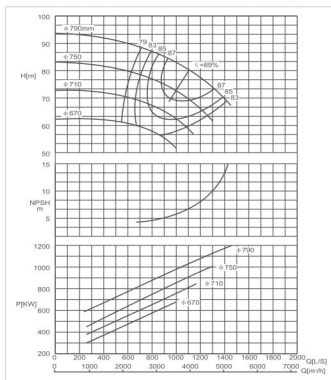
Dimensions

Model	Pump size (mm)											WGT kg					
	m1	m2	m3	m4	n1	n2	n3	n4	b	a1	a2		l	f	h1	h2	H
500-640	940	820	1240	1120	560	560	450	450	220	850	800	865	1115	920	495	1545	2301
500-700	940	820	1340	1220	610	710	500	600	220	1050	850	910	1085	1000	550	1620	2967

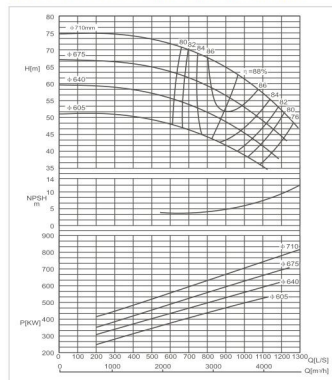
Connection dimensions

Model	Suction flange (mm)					Discharge flange (mm)					ISd of pump side coupling	Foundation bolts
	Ds	D1	D2	n-φd1	S1	D3	D4	n-φd2	S2			
500-640	600	770	840	20-φ37	55	500	650	715	20-φ34	46	φ95x170	4-M36x600
500-700	600	770	840	20-φ37	55	500	650	715	20-φ34	46	φ105x180	4-M36x600

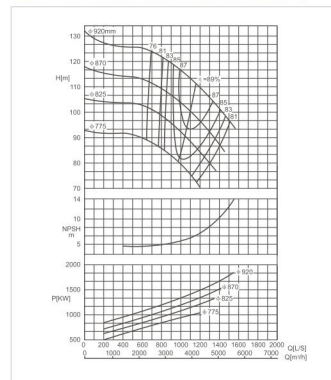
SBS500-790 E Performance Curve n=960r/min



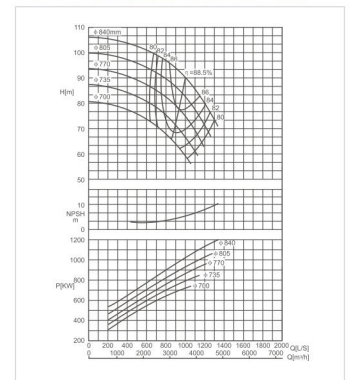
SBS500-790 F Performance Curve n=960r/min



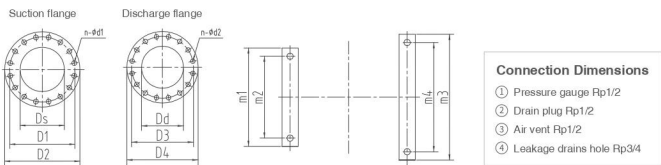
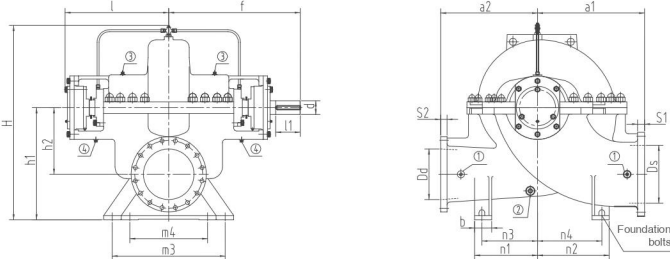
SBS500-890 E Performance Curve n=960r/min



SBS500-890 F Performance Curve n=960r/min



SBS Horizontal pump installation dimension drawing



Parameter Chart

Model	Capacity		Head	Speed	Eff. %	Motor power kW	NPSH m	Impeller diameter mm
	m³/h	LS						
SBS 500-790E	2950	711	88.5	75	79	1120/1250	71	790
	3960	1100	89	89	88	900/1120	6	750
	5150	1461	88	82	78			
	2160	650	89	88	88			
	3480	1000	72.8	88	88			
	4680	1390	62	81	81			
	1910	536	71	77	77			
	3220	894	65.5	87	80			
	4100	1139	57	80	80			
	1710	475	62	76	76			
SBS 500-790F	2850	732	58	86	830/710	4.5	670	
	3600	1000	51.8	79				
	2375	640	79.8	80				
	3490	970	62.5	88				
	4550	1264	48	75				
	2080	556	64	78				
	3330	925	54	87				
	4350	1208	44	75				
	1900	520	57	77				
	3150	875	59	86				
SBS 500-890E	4150	1153	39.3	74	560/630	4.5	640	
	1780	494	49	76				
	2970	825	43.6	85				
	3900	1083	34	74				
	2520	700	124	76				
	4230	1175	112	89				
	5500	1528	95.5	80				
	2400	667	112	76				
	4000	1111	100	88				
	5200	1444	86	79				
SBS 500-890F	2230	651	103.5	75				
	3790	1053	90.5	87				
	4930	1369	77	78				
	2150	597	90	74				
	3550	986	80.5	86				
	4820	1290	75.5	77				
	2160	660	101	78				
	3600	1000	90	88.5				
	4680	1300	73	80				
	2100	583	94.7	77				
SBS 500-890F	3480	967	83.5	88				
	1920	558	88	76				
	3200	911	77.8	88				
	4020	1132	63	75				
	1920	583	82	75				
	3200	889	71.5	87				
	4020	1117	60	77				
	1840	511	75	74				
	3060	850	66	86				
	3780	1050	54	75				

Parameter Chart

Model	Capacity		Head	Speed	Eff. %	Motor power kW	NPSH m	Impeller diameter mm
	m³/h	LS						
SBS 500-890E	2520	700	124	76	76	1600/1800	7	920
	4230	1175	112	89	89			
	5500	1528	95.5	80	80			
	2400	667	112	76	76			
	4000	1111	100	88	88			
	5200	1444	86	79	79			
	2230	651	103.5	75	75			
	3790	1053	90.5	87	87			
	4930	1369	77	78	78			
	2150	597	90	74	74			
SBS 500-890F	3550	986	80.5	86	86	1120	5.5	775
	4820	1290	75.5	77	77			
	2160	660	101	78	78			
	3600	1000	90	88.5	88.5	1120/1250	5.9	840
	4680	1300	73	80	80			
	2100	583	94.7	77	77			
	3480	967	83.5	88	88	1000/1120	5	805
	1920	558	88	76	76			
	3200	911	77.8	88	88	900/1120	4.5	770
	4020	1132	63	75	75			
SBS 500-890F	1920	583	82	75	75			
	3200	889	71.5	87	87	800/900	4.2	735
	4020	1117	60	77	77			
	1840	511	75	74	74			
	3060	850	66	86	86	800	4	700
	3780	1050	54	75	75			

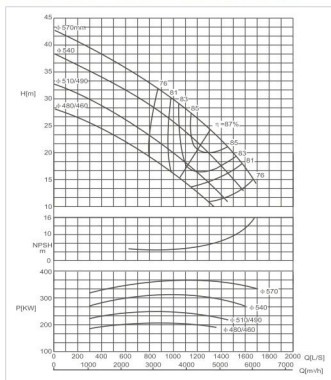
Dimensions

Model	Pump size (mm)													WGT kg			
	m1	m2	m3	m4	n1	n2	n3	n4	b	a1	a2	l	f		h1	h2	H
500-790	965	945	1340	1220	660	760	550	650	220	1000	900	780	1140	1050	600	1710	3483
500-890	1000	870	1240	1120	710	810	600	700	220	1050	950	920	1210	1100	650	1810	4659

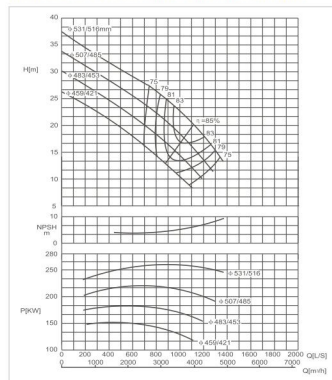
Connection dimensions

Model	Suction flange (mm)					Discharge flange (mm)					Ød1 of pump side coupling	Foundation bolts
	Ds	D1	D2	n-Ød1	S1	D3	D4	n-Ød2	S2			
500-790	600	770	840	20-Ø37	55	500	650	715	20-Ø34	46	Ø115x250	4-M30x600
500-890	600	770	840	20-Ø37	55	500	650	715	20-Ø34	46	Ø135x250	4-M42x600

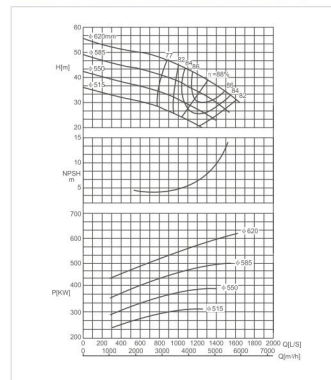
SBS5600-540 E Performance Curve n=960r/min



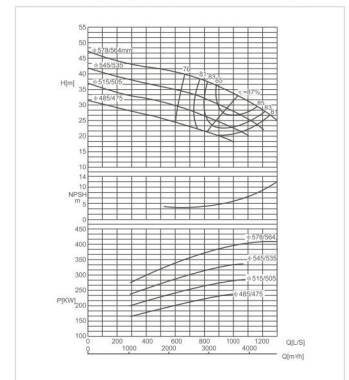
SBS5600-540 F Performance Curve n=960r/min



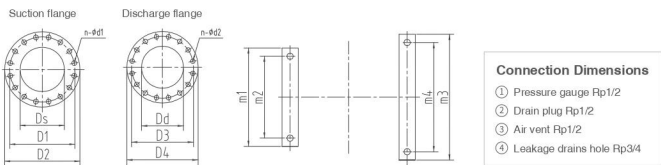
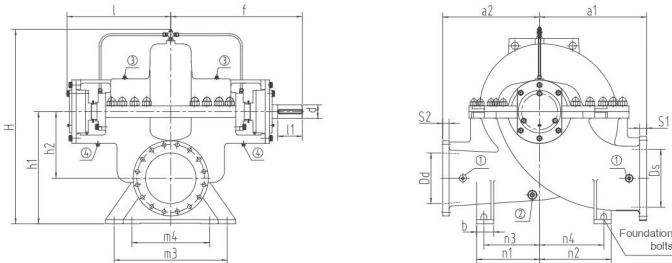
SBS5600-620 E Performance Curve n=960r/min



SBS5600-620 F Performance Curve n=960r/min



SBS Horizontal pump installation dimension drawing



Parameter Chart

Model	Capacity		Head	Speed	Eff. %	Motor power kW	NPSH m	Impeller diameter mm
	m ³ /h	LS						
SBS 600-540E	2416	781	31.3	74				
	4880	1390	24.2	87	400	5.9	570	
	6880	1689	14.3	75				
	2660	739	33.7	73				
	4430	1231	21.5	86	355	5	540	
	5890	1581	13	74				
	2430	675	25	72				
	4040	1122	17.8	85	250	4.5	510	
	5220	1450	11	73				
	2270	631	21.5	71				
SBS 600-540F	3780	1050	15.5	84	220	4.2	480	
	4850	1347	10	72				
	2370	658	28.9	79				
	3960	1160	20.3	85	315	6	531	
	4900	1361	13.3	74				
	2250	625	28.8	72				
	3750	1042	18	84	250	5.8	507	
	4680	1278	11.5	73				
	2070	575	22.3	71				
	3450	958	15.5	83	200	5	483	
SBS 600-620E	4250	1181	10	79				
	1890	525	19.3	70				
	3150	875	13	82	160	4	459	
	4080	1111	8.5	72				
	2830	756	48	75				
	4720	1311	39	88	630	7.8	620	
SBS 600-620F	5940	1650	30	81				
	2650	756	42	75				
	4420	1228	34	87	540	6.5	585	
	5580	1500	26	80				
	2450	681	36	74				
	4080	1133	29	86	450	6	550	
	5040	1400	23.2	80				
	2250	625	30	73				
	3750	1042	24.8	85	355	5	515	
	4500	1250	20	79				
SBS 600-620F	2215	615	40.5	75				
	3690	1025	33	87	450	6	578	
	4680	1300	25	80				
	2060	572	35	74				
	3440	956	29	86	355	5	545	
	4400	1222	22	79				
	1900	528	30	73				
	3170	881	25	85	280/315	4.7	515	
	3980	1106	20	78				
	2950	819	21.5	84	250	4.5	485	

Parameter Chart

Model	Capacity		Head	Speed	Eff. %	Motor power kW	NPSH m	Impeller diameter mm
	m ³ /h	LS						
SBS 600-620E	2416	781	31.3	74				
	4880	1390	24.2	87	400	5.9	570	
	6880	1689	14.3	75				
	2660	739	33.7	73				
	4430	1231	21.5	86	355	5	540	
	5890	1581	13	74				
	2430	675	25	72				
	4040	1122	17.8	85	250	4.5	510	
	5220	1450	11	73				
	2270	631	21.5	71				
SBS 600-620F	3780	1050	15.5	84	220	4.2	480	
	4850	1347	10	72				
	2370	658	28.9	79				
	3960	1160	20.3	85	315	6	531	
	4900	1361	13.3	74				
	2250	625	28.8	72				
	3750	1042	18	84	250	5.8	507	
	4680	1278	11.5	73				
	2070	575	22.3	71				
	3450	958	15.5	83	200	5	483	

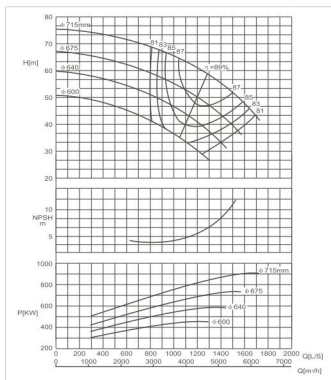
Dimensions

Model	Pump size (mm)											WGT kg					
	m1	m2	m3	m4	n1	n2	n3	n4	b	a1	a2		l	f	h1	h2	H
600-540	950	800	1250	1100	700	800	550	650	300	1100	900	880	1020	1100	610	1850	2725
600-620	920	800	1220	1100	800	800	650	650	300	1000	1000	840	1060	1050	545	1700	2961

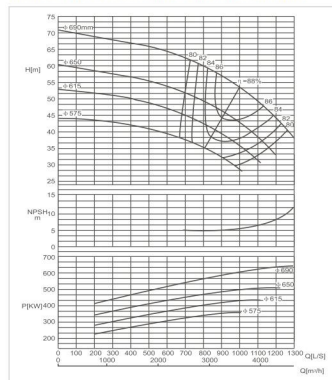
Connection dimensions

Model	Suction flange (mm)					Discharge flange (mm)					IS1 of pump side coupling	Foundation bolts
	Ds	D1	D2	n-φd1	S1	D3	D4	n-φd2	S2			
600-540	700	840	910	24-φ37	55	600	770	840	20-φ37	55	φ95x170	4-M36x600
600-620	700	840	910	24-φ37	55	600	770	840	20-φ37	55	φ95x170	4-M36x600

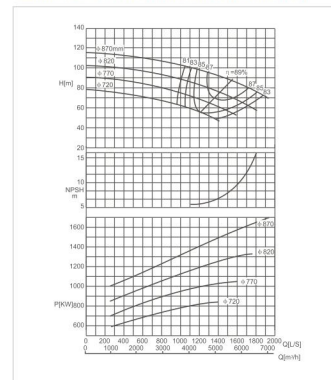
SBS600-710 E Performance Curve n=960r/min



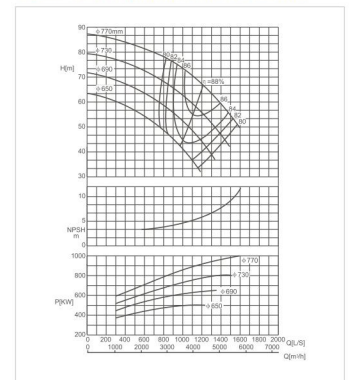
SBS600-710 F Performance Curve n=960r/min



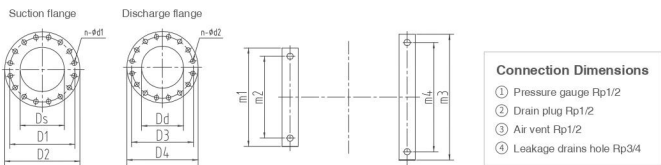
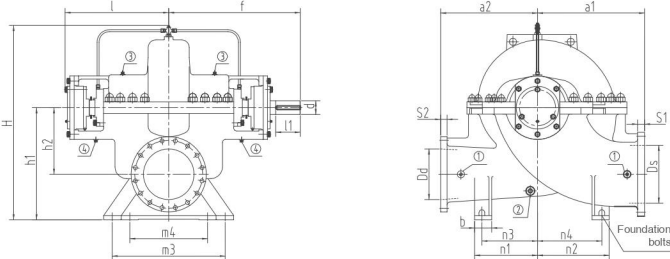
SBS600-830 E Performance Curve n=960r/min



SBS600-830 F Performance Curve n=960r/min



SBS Horizontal pump installation dimension drawing



Connection Dimensions

- ① Pressure gauge Rp1/2
- ② Drain plug Rp1/2
- ③ Air vent Rp1/2
- ④ Leakage drains hole Rp3/4

Parameter Chart

Model	Capacity		Head	Speed	Eff. %	Motor power kW	NPSH m	Impeller diameter mm
	m³/h	LS						
SBS 600-710E	2790	772	64	80				
	4830	1286	58.5	89	900	6.5	715	
	6950	1680	42.5	80				
	2600	722	60.5	79				
	4320	1200	50	88	800	5.5	675	
	5620	1561	38	79				
	2430	675	53	78				
	4050	1125	43	87	630	5	640	
	2270	630	45	77				
	3780	1050	35	86	500	4.5	600	
SBS 600-710F	2160	600	64.5	78				
	3600	1000	54	89	710	5.2	690	
	4680	1390	38	78				
	1990	533	54.6	77				
	3310	919	45.8	87	560	5	650	
	4300	1194	37	77				
	1880	522	48.2	76				
	3130	869	40.5	86	450	5	615	
	4060	1128	30.5	76				
	1740	483	41	75				
SBS 600-830E	2900	806	35	85	400	5	575	
	3670	1019	28	75				

Parameter Chart

Model	Capacity		Head	Speed	Eff. %	Motor power kW	NPSH m	Impeller diameter mm
	m³/h	LS						
SBS 600-830E	3300	917	106	79				
	5500	1528	87.5	89	1600/1800	8.5	870	
	6950	1931	70	82				
	2600	850	90	79				
	5110	1419	76	88	1400	7	826	
	6480	1800	57	85				
	2800	778	82	77				
	4880	1330	62	87	1120/1400	6.2	770	
	5800	1611	57	86				
	2610	725	70	76				
SBS 600-830F	4350	1208	56	87	900	5.8	720	
	5640	1400	47	82				
	2600	722	79	78				
	4320	1200	64.2	89	1000	6	770	
	5620	1561	51	80				
	2460	683	71.4	78				
	4100	1139	58	87	800	5.4	730	
	5320	1478	42	79				
	2300	639	62.8	78				
	3820	1061	50	87	710/800	5	690	
SBS 600-830F	4950	1375	48	89				
	2080	578	55	77				
	3460	961	42.5	86	560	4.5	650	
	4230	1181	32	79				

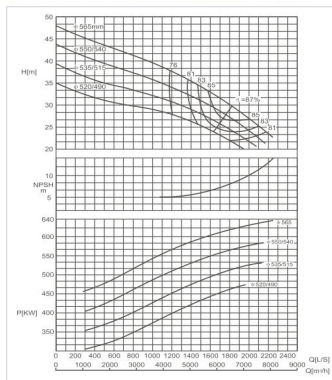
Dimensions

Model	Pump size (mm)											WGT kg					
	m1	m2	m3	m4	n1	n2	n3	n4	b	a1	a2		l	f	h1	h2	H
600-710	1020	900	1320	1200	800	800	650	650	300	1000	1100	930	1160	1050	545	1700	3427
600-830	1050	900	1350	1200	800	900	650	750	300	1100	1200	985	1260	1100	580	1860	4950

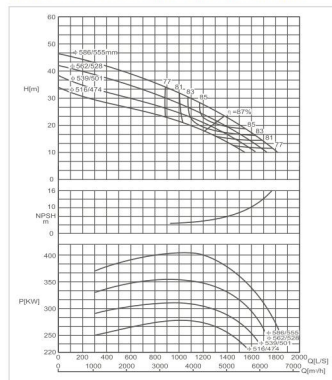
Connection dimensions

Model	Suction flange (mm)					Discharge flange (mm)					ød of pump side coupling	Foundation bolts
	Ds	D1	D2	n-ød1	S1	D3	D4	n-ød2	S2			
600-710	700	880	910	24-ø37	55	600	770	840	20-ø37	55	ø115x250	4-M42x600
600-830	700	875	960	24-ø43	60	600	770	845	20-ø40	55	ø125x250	4-M42x600

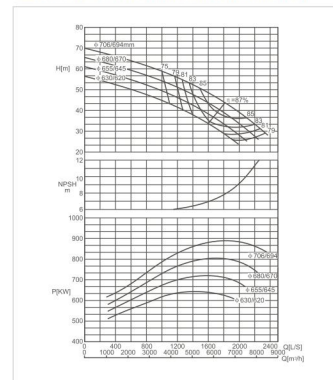
SBS700-590 E Performance Curve n=960r/min



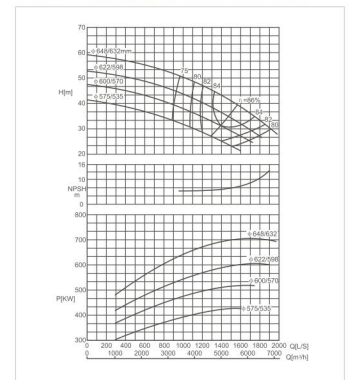
SBS700-590 F Performance Curve n=960r/min



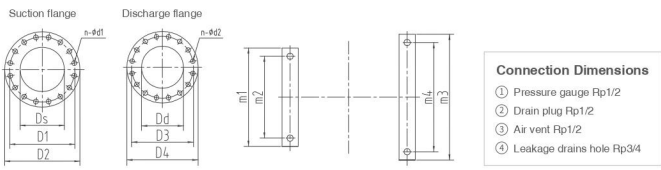
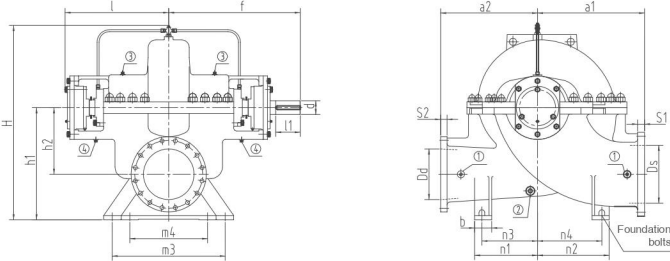
SBS700-710 E Performance Curve n=960r/min



SBS700-710 F Performance Curve n=960r/min



SBS Horizontal pump installation dimension drawing



Parameter Chart

Model	Capacity		Head	Speed	Eff.	Motor power	NPSH	Impeller diameter
	m³/h	LS						
SBS 700-590E	3900	1061	33.8	75	75	710	8	565
	6480	1800	30	87	80	630	7.5	550
	10800	2229	22.7	80	75	560	7	535
	3780	1050	35.5	75	75	560	7	535
	6300	1750	28	86	79	560	7	535
	7800	2167	21.2	79	79	560	7	535
	3630	1008	32	74	74	400	6	586
	6090	1481	26	86	76	400	6	586
	3500	972	29	74	76	315	5	539
	5870	1461	24	85	76	280	4.5	516
SBS 700-590F	2880	828	35.2	76	76	400	6	586
	4970	1381	23.7	87	80	400	6	586
	6500	1806	19.2	76	76	400	6	586
	2850	792	34	76	76	315	5	539
	4540	1261	29	86	76	280	4.5	516
	5900	1639	19.5	76	76	280	4.5	516
	2010	725	25	76	76	280	4.5	516
	4350	1288	18	85	85	280	4.5	516
	5550	1542	19	78	78	280	4.5	516

Parameter Chart

Model	Capacity		Head	Speed	Eff.	Motor power	NPSH	Impeller diameter
	m³/h	LS						
SBS 700-710E	3650	1014	54.5	75	75	710	8	565
	6500	1806	44	87	80	630	7.5	550
	9400	2550	28	78	75	560	7	535
	6270	1742	40.2	86	79	560	7	535
	8060	2239	26	78	79	560	7	535
	3570	992	49.5	74	74	400	6	586
	5950	1453	37	86	80	400	6	586
	7560	2100	25.5	78	79	400	6	586
	3450	958	45	74	74	315	5	539
	5740	1534	34	86	76	280	4.5	516
SBS 700-710F	3180	883	45.5	74	74	400	6	586
	5550	1819	26.5	78	78	400	6	586
	3180	883	45.5	74	74	315	5	539
	5040	1400	31.5	85	76	280	4.5	516
	6200	1722	24.5	78	78	280	4.5	516
	2780	772	35.8	73	73	280	4.5	516
	4630	1286	27.5	84	84	280	4.5	516
	5780	1600	21	77	77	280	4.5	516

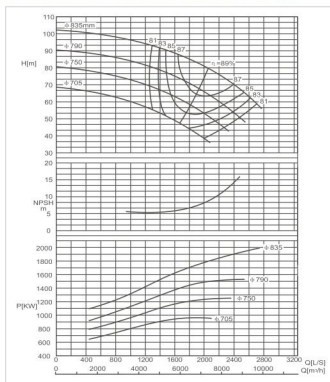
Dimensions

Model	Pump size (mm)										WGT					
	m1	m2	m3	m4	n1	n2	n3	n4	b	a1						
700-590	940	790	1240	1090	600	900	425	725	350	1150	1300	1150	600	1870	4043	
700-710	940	790	1240	1090	900	900	725	725	350	1200	1150	1130	1360	1170	1920	5329

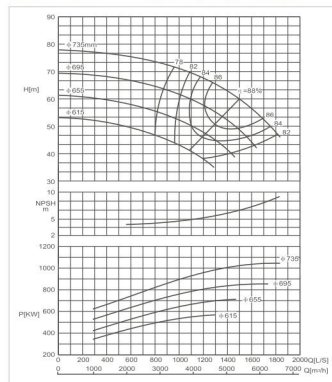
Connection dimensions

Model	Suction flange (mm)					Discharge flange (mm)					IS1 of pump side coupling	Foundation bolts
	Ds	D1	D2	n-φd1	S1	Dd	D3	D4	n-φd2	S2		
700-590	800	950	1025	24-φ40	65	700	840	910	24-φ37	55	φ95x210	4-M30x600
700-710	800	950	1025	24-φ40	65	700	840	910	24-φ37	55	φ115x250	4-M42x600

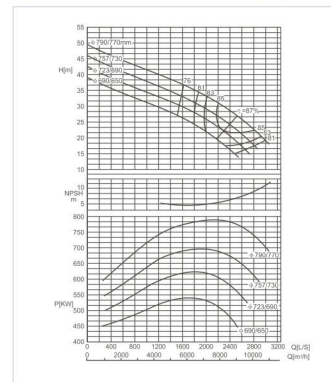
SBS700-820 E Performance Curve n=960r/min



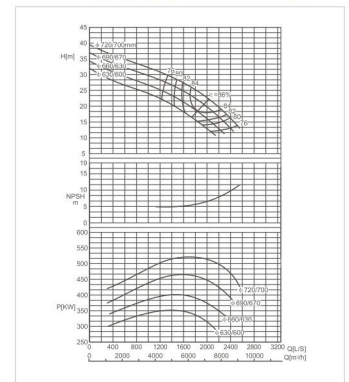
SBS700-820 F Performance Curve n=960r/min



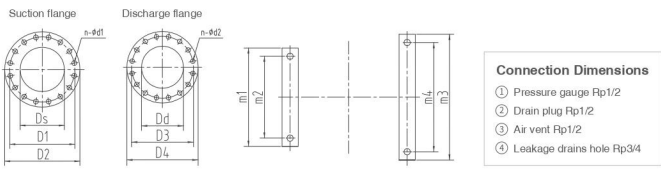
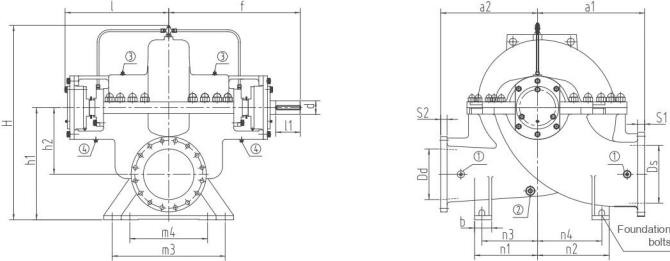
SBS800-740 E Performance Curve n=725r/min



SBS800-740 F Performance Curve n=725r/min



SBS Horizontal pump installation dimension drawing



Parameter Chart

Model	Capacity		Head	Speed	Eff.	Motor power	NPSH	Impeller diameter	
	m³/h	LS							
SBS 700-820E	4410	1251	92	960	80	2000	8.8	835	
	7380	2050	80	89	80	2000	8.8	835	
	9600	2667	68	82	80	1600	8	790	
	4180	1161	82.6	80	88	1600	8	790	
	6960	1933	68	88	80	1400	7	750	
	9050	2514	49	81	80	1000	6.3	705	
	3930	1092	71.5	79	80	1120	6.8	735	
	6550	1819	58	87	80	900	6	695	
	3600	1000	60	78	80	710	5.5	655	
	6010	1669	48	86	80	630	5	615	
SBS 700-820F	2400	950	72.8	77	80	350	12.50	1250	
	5400	1500	60	89	80	350	12.50	1250	
	6600	1833	46	81	80	350	12.50	1250	
	2970	825	65	77	80	350	12.50	1250	
	4950	1375	53.8	87	900	6	695		
	5900	1639	42	80	80	6600	1833	18.5	74
	2640	733	56.6	76	80	3760	1044	23.8	73
	4400	1222	47	86	80	6200	2292	11.4	74
	5200	1461	39	80	80	6200	2292	11.4	74
	2340	650	49	75	80	3760	1044	23.8	73
SBS 800-740E	3900	1083	41.5	85	630	5	615		
	4620	1283	35.5	79	79	7700	2139	10.5	74

Parameter Chart

Model	Capacity		Head	Speed	Eff.	Motor power	NPSH	Impeller diameter
	m³/h	LS						
SBS 800-740E	5400	1500	31.8	74	80	800	7	790
	9000	2500	27	87	800	7	790	
	11000	3556	18.2	80	710	6.3	757	
	5200	1444	34.5	86	630	6	723	
	8640	2400	24.3	86	560	5.5	680	
	10800	2961	16.5	79	500	7	690	
	4970	1381	31.6	74	800	7.2	720	
	4700	1306	29	74	800	7.2	720	
	7850	2180	20	86	560	5.5	680	
	9200	2556	14	79	500	7	690	
SBS 800-740F	4360	1211	30.8	75	800	7.2	720	
	7270	2019	22.2	86	560	5.5	680	
	9150	2542	13	75	500	7	690	
	4170	1158	28.6	75	800	7.2	720	
	6950	1931	20.6	85	500	7	690	
	8720	2422	12.5	75	500	7	690	
	3960	1100	26	74	800	7.2	720	
	6600	1833	18.5	84	450	6	660	
	8250	2292	11.4	74	800	7.2	720	
	6200	1739	16.5	84	400	6	630	
7700	2139	10.5	74	800	7.2	720		

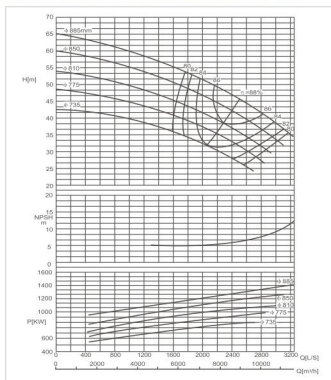
Dimensions

Model	Pump size (mm)											WGT					
	m1	m2	m3	m4	n1	n2	n3	n4	b	a1	a2						
700-820	940	790	1240	1090	950	950	775	775	350	1250	1250	1360	1200	650	2050	6075	
800-740	1010	890	1310	1190	750	900	550	700	400	1400	950	1180	1410	1380	770	2300	6557

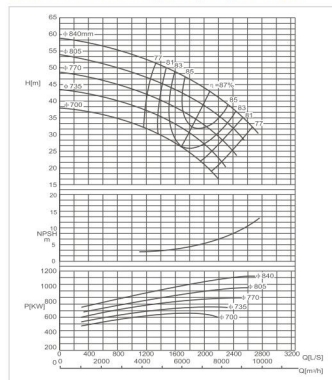
Connection dimensions

Model	Suction flange (mm)					Discharge flange (mm)					泵联内径及长度 dx1	Foundation bolts
	Ds	D1	D2	n-φd1	S1	D3	D4	n-φd2	S2			
700-820	800	950	1025	24-φ40	65	700	840	910	24-φ37	55	φ135x250	4-M42x600
800-740	900	1050	1125	28-φ40	68	800	950	1025	24-φ40	65	φ115x250	4-M42x600

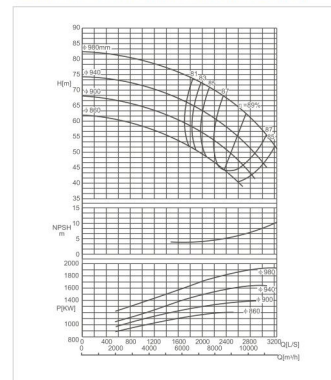
SBS800-840 E Performance Curve n=725r/min



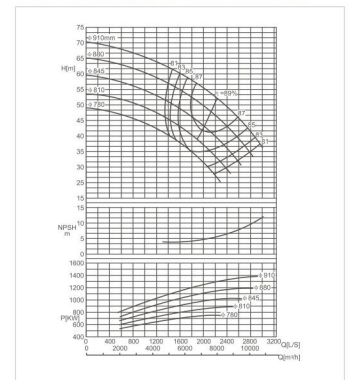
SBS800-840 F Performance Curve n=725r/min



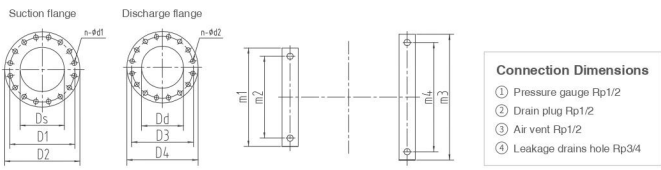
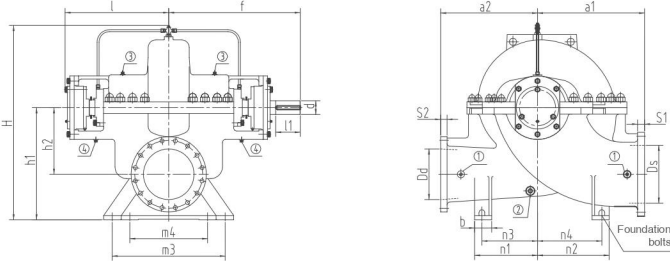
SBS800-970 E Performance Curve n=725r/min



SBS800-970 F Performance Curve n=725r/min



SBS Horizontal pump installation dimension drawing



Parameter Chart

Model	Capacity		Head	Speed	Eff.	Motor power	NPSH	Impeller diameter	
	m³/h	LS							
SBS 800-840E	1400	1500	54.4	725	76	76	1400	6.3	885
	1700	2500	44	88	1400	6.3	885		
	2000	3200	34.5	78	1250	6	850		
	2400	4000	27	78	1100	5.5	810		
	2800	4800	22	77	900	5	735		
	3200	5600	18	76	800	4.5	770		
	3600	6400	15	75	710	4.2	735		
	4000	7200	12	74	630	4	700		
	4400	8000	10	73	560	3.8	660		
	4800	8800	8	72	500	3.5	620		

Parameter Chart

Model	Capacity		Head	Speed	Eff.	Motor power	NPSH	Impeller diameter	
	m³/h	LS							
SBS 800-970E	1800	1633	75.5	725	76	76	1400	6.3	885
	2200	2722	62.5	88	1400	6.3	885		
	2600	3222	51.2	85	1250	6	850		
	3000	3956	45.2	84	1100	5.5	810		
	3400	4722	40.5	83	900	5	735		
	3800	5522	36.5	82	800	4.5	770		
	4200	6356	33	81	710	4.2	735		
	4600	7222	30	80	630	4	700		
	5000	8122	27.5	79	560	3.8	660		
	5400	9056	25.5	78	500	3.5	620		

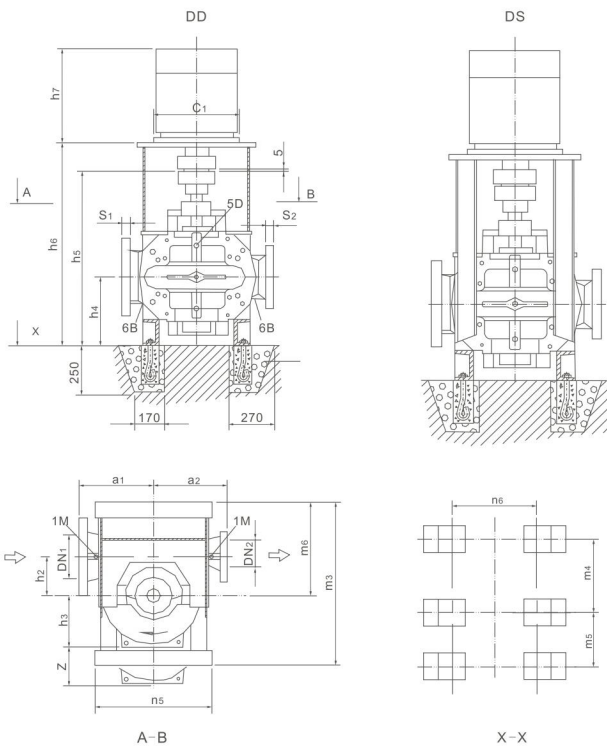
Dimensions

Model	Pump size (mm)													WGT			
	m1	m2	m3	m4	n1	n2	n3	n4	b	a1	a2	l	f		h1	h2	H
800-840	1010	890	1310	1190	900	950	700	750	400	1400	1125	1180	1500	1360	770	2260	6624
800-970	1010	890	1310	1190	1000	1000	800	800	400	1400	1300	1270	1580	1370	760	2220	7809

Connection dimensions

Model	Suction flange (mm)					Discharge flange (mm)					泵联内径及长度 d×l	Foundation bolts
	Ds	D1	D2	n-φd1	S1	D3	D4	n-φd2	S2			
800-840	900	1050	1125	28-φ40	68	800	950	1025	24-φ40	65	φ125×250	4-M42×600
800-970	900	1050	1125	28-φ40	68	800	950	1025	24-φ40	65	φ145×250	4-M42×600

Vertical pump installation dimensions



Connection dimensions

1M Pressure gauge Rp1/2

5D Air vent Rp1/2

6B Drain plug Rp1/2

The main dimensions of the pump

Model	Flange size				Pump size						Pump weight		
	ND1	ND2	S1	S2	a1	a2	h2	h3	h4	h5	Z	N.W	G.W
80-210	125	80	34.1	28.6	300	300	140	168	320	715	340	185	195
80-270					190	380		195				210	
80-370					225	450		205				225	

Model	Flange size				Pump size						Pump weight		
	ND1	ND2	S1	S2	a1	a2	h2	h3	h4	h5	Z	N.W	G.W
100-250	150	100	36.5	31.8	330	330	170	195	300	715	390	210	230
100-310					225	450		225				250	
100-375					260	520		245				275	

Model	Flange size				Pump size						Pump weight			
	ND1	ND2	S1	S2	a1	a2	h2	h3	h4	h5	Z	N.W	G.W	
125-230	200	125	41.3	34.3	370	370	200	210	355	870	420	250	285	
125-290								230				460	275	315
125-365								260				520	300	345
125-400								285				570	325	380
125-500								305				610	335	380

Model	Flange size				Pump size						Pump weight			
	ND1	ND2	S1	S2	a1	a2	h2	h3	h4	h5	Z	N.W	G.W	
150-290	200	150	41.3	36.5	400	400	200	245	355	870	490	350	400	
150-360								265				530	360	420
150-460								305				610	436	511
150-605								370				740	646	736

Model	Flange size				Pump size						Pump weight				
	ND1	ND2	S1	S2	a1	a2	h2	h3	h4	h5	Z	N.W	G.W		
200-320	250	200	47.6	41.3	450	450	240	285	400	990	570	450	530		
200-420					500	500		310				620	520	615	
200-520					600	500		300				370	740	840	955
200-670					650	550		350				430	860	990	1130

Model	Flange size				Pump size						Pump weight				
	ND1	ND2	S1	S2	a1	a2	h2	h3	h4	h5	Z	N.W	G.W		
250-370	300	250	50.8	47.5	500	500	300	320	440	1095	640	665	790		
250-480					550	550		350				710	830	975	
250-600					650	500		350				415	830	1215	1395
250-710					750	650		400				480	940	1580	1655

Model	Flange size				Pump size						Pump weight					
	ND1	ND2	S1	S2	a1	a2	h2	h3	h4	h5	Z	N.W	G.W			
300-300	350	300	54	50.8	550	500	300	360	440	1095	720	630	730			
300-435			57.2		650	550		365				500	1230	730	905	1095
300-560			57.2		700	650		350				430	860	1425	1650	
300-700	750	650	400	480	960	1690	1965									

Model	Flange size				Pump size						Pump weight						
	ND1	ND2	S1	S2	a1	a2	h2	h3	h4	h5	Z	N.W	G.W				
350-360	400	350	57.2	54	650	500	350	410	500	1230	820	865	1025				
350-430			60.3		750	465		930				1285	1525				
350-510			60.3		700	650		400				420	570	1380	840	1395	1685
350-590			63.4		750	465		960				1510	1800				

z: Minimum space dimensions required to remove the rotor

Y series motor dimensions

Pump Model	Structures		Motor Model	h6	h7	m3	m4	m5	m6	n5	n6	Motor weight			
	DD	DS													
80-210	•	—	Min.90L	770	295	640							28		
			Max.200L	740	255								450	270	
	—	•	Min.225M	830	795								720	710	308
			Max.225M		795									308	
80-270	•	—	Min.100L	780	320	640	275	100	380	450	340		29		
			Max.200L	740	255								450	270	
	—	•	Min.225M	830	795								720	710	308
			Max.280M		860									620	
80-370	•	—	Min.132S	800	395	640							72		
			Max.180L	830	660								450	200	

Pump Model	Structures		Motor Model	h6	h7	m3	m4	m5	m6	n5	n6	Motor weight			
	DD	DS													
100-250	•	—	Min.100L	780	320	695							39		
			Max.225L	830	795								500	308	
	—	•	Min.250M	860	895								760	810	403
			Max.315S		1220									980	
100-310	•	—	Max.132M	880	435	695							84		
			Max.225M	830	795								500	308	
	—	•	Min.250M	860	895								760	810	403
			Max.315L		1320									1220	
100-375	•	—	Min.160M	830	495	695							130		
			Max.225M	860	795								500	320	
	—	•	Min.250M	860	895								760	810	427
			Max.250M												

Pump Model	Structures		Motor Model	h6	h7	m3	m4	m5	m6	n5	n6	Motor weight			
	DD	DS													
125-230	•	—	Min.132S	955	395	855							72		
			Max.280M	1030	620								600	620	
	—	•	Min.315S	1015	1220								820	860	1080
			Max.315M		1320									84	
125-290	•	—	Min.132M	955	435	855							84		
			Max.280M	1030	620								600	620	
	—	•	Min.315S	1015	1220								820	860	1080
			Max.315L		1320									84	
125-365	•	—	Min.160L	985	540	855							145		
			Max.280S	1015	980								600	562	
125-500	•	—	Min.200L	985	740	855							270		
			Max.315M	1045	1320								700	560	

Pump Model	Structures		Motor Model	h6	h7	m3	m4	m5	m6	n5	n6	Motor weight										
	DD	DS																				
150-290	•	—	Min.160M	955	495	855							130									
			Max.225M	1015	795								600	450								
	—	•	Min.180M	985	620								700	560	180							
			Min.280S		1015									980	562							
150-460	•	—	Min.200L	1105	740	855							270									
			Max.315L	1165	1320								700	560								
150-605	•	—	Min.250M	1135	895	1060	460	315	575	900	700			427								
			Max.YL3552	1205	1710									2330								
	—	•	Min.YL3553	1205	1710									1340	460	315	575	1300	700			2490
			Max.YL3554																			

Y series motor dimensions

Pump Model	Structures		Motor Model	h6	h7	m3	m4	m5	m6	n5	n5	n6	Motor weight							
	DD	DS																		
200-320	•	—	Min.200L	400	1105	740	1060	480						270						
			Max.280M	550	1135	1030								667						
	—	•	Min.225S	450	1135	770								284						
			Max.315L		660									1165	1320					
200-420	•	—	Min.280S	550	1240	980	1120							562						
			Max.YL3552	1150	1310	1710								900						
	—	•	Min.YL3553	1150	1310	1710								1400	520	315	635	1300	560	2330
			Max.YL4002		1850									3000						
200-520	•	—	Min.315S	660	1270	1220	1180							1000						
			Max.YL3552	1150	1310	1710								900						
	—	•	Min.YL3553	1150	1310	1710								1400	560	685	1300	700	2330	
			Max.YL4005		1850									2490						
200-670	•	—	Min.315S	660	1270	1220	1180							1000						
			Max.YL3552	1150	1310	1710								900						
	—	•	Min.YL3553	1150	1310	1710								1460	560	685	1300	700	2330	
			Max.YL4005		1850									2490						

Pump Model	Structures		Motor Model	h6	h7	m3	m4	m5	m6	n5	n5	n6	Motor weight						
	DD	DS																	
250-370	•	—	Min.280S	550	1240	980	1180							562					
			Max.315L	660	1270	1320								667					
	—	•	Min.280M	550	1375	1030								580	685	900	1300	700	2330
			Max.YL3552		1150									1445	1710	2490			
250-480	•	—	Min.YL3553	1150	1445	1710	1460							2490					
			Max.YL4001	660	1405	1320								2960					
	—	•	Min.315M	660	1405	1320								1210	900	1100			
			Max.YL3552		1150									1445	1710	2330			
250-600	•	—	Min.YL3553	1150	1445	1710	1460							2490					
			Max.YL4502	1250	1445	2000								900	3430				
	—	•	Min.YL3554	1150	1595	2000								1415	1300	2650			
			Max.YL4504		1250									1595	2000	3520			
250-710	•	—	Min.YL4504	1250	1595	2000	1610	710	400	835	1400	950		4070					
			Max.YL5003	1400	1635	2000								4720					
	—	•	Min.YL5003	1400	1635	2100								1680	1400	1400			
			Max.YL5004																

Pump Model	Structures		Motor Model	h6	h7	m3	m4	m5	m6	n5	n5	n6	Motor weight						
	DD	DS																	
300-300	•	—	Min.200L	400	1210	1220	1210	590						270					
			Max.315S	660	1270	1030								1000					
	—	•	Min.280M	550	1375	1030								1250	315	715	900	700	667
			Max.YL3552		1150									1445	1710	2330			
300-435	•	—	Min.YL3553	1150	1445	1710	1530							2490					
			Max.YL4002	1150	1445	1710								1300					
	—	•	Min.315M	660	1405	1320								1210	900	1100			
			Max.YL3552		1150									1445	1710	2330			
300-560	•	—	Min.315L	660	1555	1320	1375	670						1240					
			Max.YL4503	1250	1595	2000								3520					
	—	•	Min.YL3554	1150	1710	1415								710	400	835	1200	950	2650
			Max.YL4503		1250									1595	2000	1300			
300-700	•	—	Min.YL4504	1250	1595	2000	1610	710	400	835	1400	950		4070					
			Max.YL5003	1400	1635	2100								4720					
	—	•	Min.YL5003	1400	1635	2100								1680	1400	1400			
			Max.YL5004																

Pump Model	Structures		Motor Model	h6	h7	m3	m4	m5	m6	n5	n5	n6	Motor weight							
	DD	DS																		
350-360	•	—	Min.250M	550	1375	895	1250							427						
			Max.315L	660	1405	1320								1220						
	—	•	Min.YL3551	1150	1445	1710								1530	630	315	755	900	700	2280
			Max.YL3551		1150									1445	1710	2280				
350-430	•	—	Min.315M	660	1555	1320	1415							1100						
			Max.YL3552	1150	1595	1710								1200						
	—	•	Min.YL3553	1150	1595	1710								1610	710	400	835	1300	950	2490
			Max.YL4003		1850									3060						
350-510	•	—	Min.YL3554	1150	1710	1415	2000							2650						
			Max.YL4503	1250	1595	2000								1200						
	—	•	Min.YL4504	1250	1595	2000								1610	1300	1300	4070			
			Max.YL5003		1400									1635	2100	1400	4720			